

FABULA

LIVING



COLLECTION 2022

Design Tradition Craftsmanship



FABULA LIVING

Fabula Living has established itself as an international design company deeply rooted in traditional techniques, craftsmanship, uncompromising quality and Danish design. We aim to tell stories with our modern rugs by bringing together design, tradition and simple style with the oriental techniques. It's this behind the scenes creative process that makes the designs stand out. Fabula Living is much more than modern interior design. The careful selection of wool, linen, cotton and other raw materials and shades of colour, the passion and patience, the thickness and the details in the weaving are present like invisible threads in all our rugs.



COLLECTION 2022



Amplifying Happiness

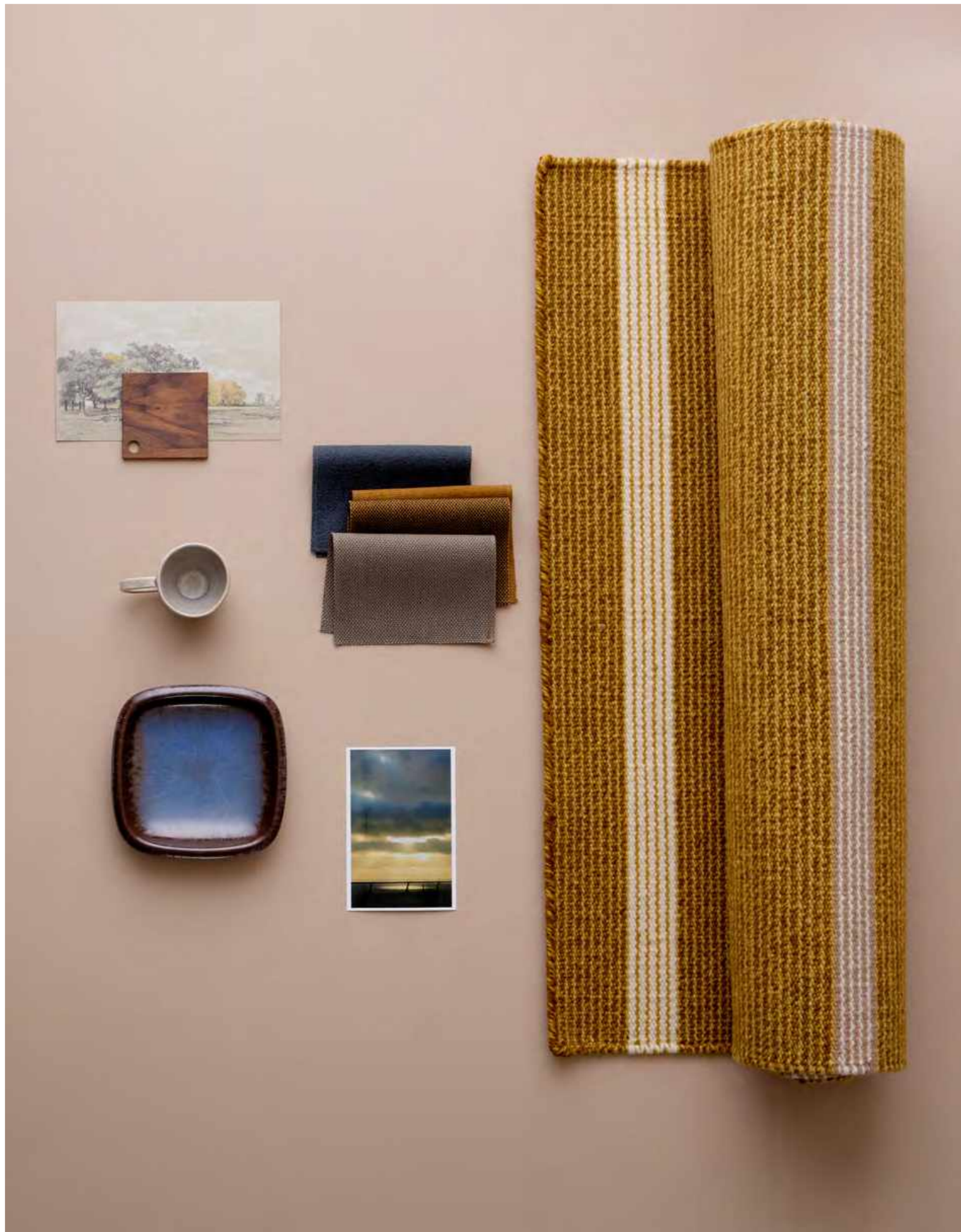
Each new collection is about sharing something new and solidifying our core, creating timeless, classic designs with a modern twist, and always adding something extra, a mood and a feeling making the rugs like imprints of the time we live in.

With the 2022 collection, we are bringing warmth, uplift, and amplifying happiness, and the four new designs push the boundaries when it comes to colours, timeless designs, and quality.

Two of the new designs, Fleur and Daisy, are designed by our long-time collaborator and renowned textile designer Lisbet Friis. Her extraordinary sense of colours and patterns is warming up the living spaces with orange, hay green, ash, moss, and gold and striped designs in a strong and subtle dance.

With the new completely natural wool rug Humle and a pure lush loom pile rug Vidar, founder Jens Schrøder Landberg is showcasing two very different ways to add understated luxury, textured warmth, and cosiness to the home.

We are also excited about expanding our collection of runners, which offers more affordable and flexible options to update the home with our high-quality aesthetic. Five designs, and a total of 15 runners, bring ample options to play with classic and contemporary style and ambience.



CONTENTS

5	COLLECTION 2022	56	BALDER
8	HUMLE	58	ANGELICA
10	VIDAR	60	TANNE
12	FLEUR	62	FENRIS
14	DAISY	64	NEW FREJA
20	ROSEMARY	66	UNA
22	VERONICA	70	ASK
24	POPPY	72	GJALL
26	NANNA	76	THOR
28	BELLIS	78	CAMELIA
30	FRIDA	80	LOTUS
32	GISLI	82	LOKE
34	RUNE	86	LILY
38	NJORD	88	MUNIN
40	GRO	90	HUGIN
42	FELICIA		
44	ODIN	92	MADE TO MEASURE
46	CALLA	94	SIZE GUIDE
48	ERICA	96	UNDERLAY
52	GIMLE	96	HOW TO CARE
54	ROLF	97	CERTIFICATES



HUMLE

Design / Jens Landberg Schrøder

Made entirely in raw natural wool, Humle is a beautiful pure rug with an understated chequered weave. Depending on the light and the angle, the pattern flickers between suggestive and subtle stripes. Like the Rolf design the undyed wool allows for a natural interplay with two different colour combinations, a lighter and a darker shade, perfect for brightening up a space or bringing some cosy grounding to a room.



1614 GREY/CHARCOAL



2710 LIGHT GREY/WHITE

Hand-woven rug in natural coloured New Zealand wool on woolen warp, reversible

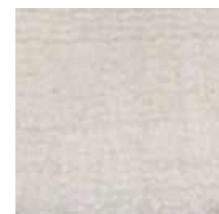
170x240 cm
200x300 cm
Made to measure

VIDAR

Design / Jens Landberg Schrøder



With this lush loom pile rug, we have combined a discreet luxurious style with our high quality. Vidar is made in exquisite wool with fine, long fibres giving the rug an incredible durability and ability to refresh and maintain the soft thickness. A small amount of viscose adds a desired soft shine, which changes slightly in tone depending on the light and infuses any room with cosy elegance. Choose between two timeless colours white and grey.



1010 WHITE



1616 GREY

Hand-loom pile rug
in New Zealand wool
and viscose

170x240 cm
200x300 cm
Made to measure



FLEUR

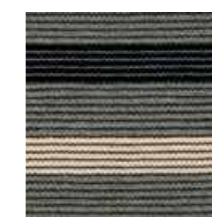
Design / Lisbet Friis

With Fleur, woven in the best quality New Zealand wool, we are introducing a design, where stripes set the tone in a new way. The harmoniously ordered stripes with a cheerful twist lift the mood in the home. The colours are adjusted to perfection, making even the more vibrant mix of orange and pink strikes a balance of matte and bright. Each colour combination offers this balanced luminousness making them compatible with all sorts of woods and material, capable of amplifying, defining, or transforming the ambience, and creating both calming and vibrant areas within a room.



Hand-woven rug
in New Zealand wool on
cotton warp, reversible

80x240 cm
140x200 cm
170x240 cm
200x300 cm
Made to measure



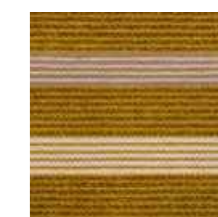
1615 ASH/BLACK



1815 MOSS/BLACK



2021 SIENNA/PURPLE



2312 GOLD/LATTE

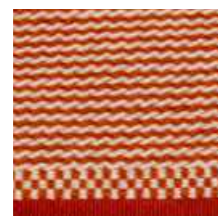
DAISY

Design / Lisbet Friis

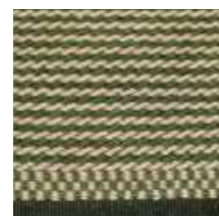
The hand-woven Daisy rug in the high-quality New Zealand wool is the perfect choice for adding bold and sophisticated colours to the home. This design displays the delicate balancing act which is the epitome of designer Lisbet Friis style and skills. The colours ranging from warm black to burnt orange sienna and hay green are subdued with a depth of clarity, and the stripes are classic with a distinct sense of something new and refreshing. The edges have a playful finish with chequer effect.



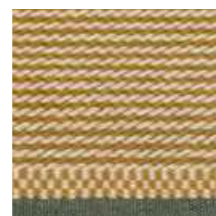
1512 BLACK/BEIGE



2011 SIENNA/OFF WHITE



4711 OLIVE/OFF WHITE

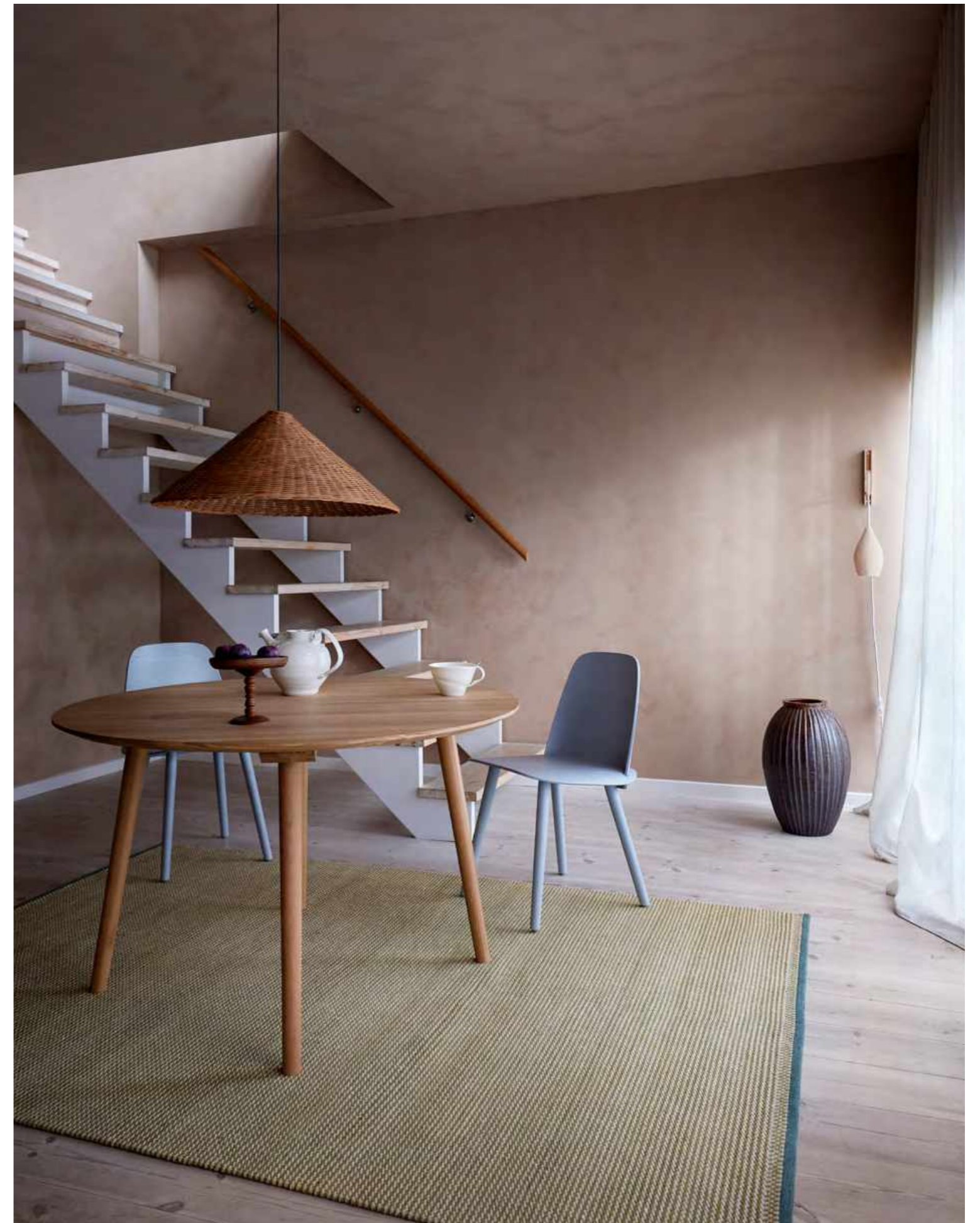


2311 HAY/OFF WHITE

Hand-woven rug
in New Zealand wool
on linen warp

80x240 cm
140x200 cm
170x240 cm
200x300 cm

Made to measure







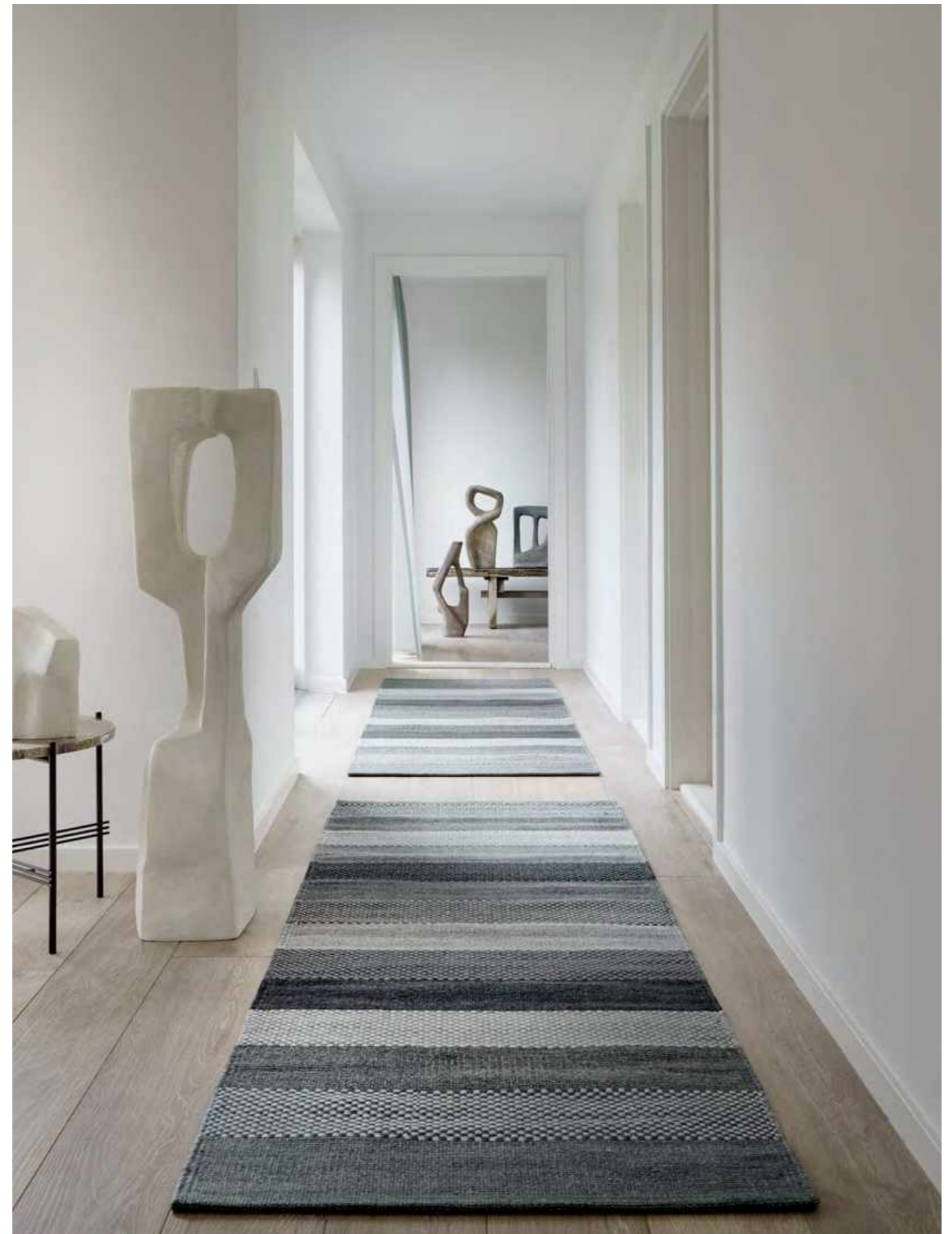
REFRESH RENEW REUSE

Our homes are reflections on how we feel and a smaller rug like a runner is a beautiful way to shift the energy and refresh the style in a room. A runner is a gamechanger in interior decoration - flexible, versatile, and an easy update to a hallway, a small space, or a kitchen.

Always looking to bring new refreshing ideas without compromising on our DNA, our new expanded collection of runners is designed and created with the same meticulous attention to details, sublime quality, and sustainable design like everything else we do.

The collection offers more affordable choices to add high-quality aesthetic lifts without compromising on the durability, which means a small rug can work as a quick makeover and be reused in other spaces again and again.

The collection features five designs making a total of 15 different runners with lots of choices to play with colours and stripes, bold and classic options. Choose between our two new designs Fleur and Daisy, which come in both calming darker tones, intense warmer golden and orange colours, or Rosemary, Poppy and Veronica designs.



ROSEMARY

Design / Lisbet Friis



Bold yet clean and elegant - the red stripe makes this statement design stand out in any home without compromising on our design core - quality and simplicity. Each stripe is spun out of two threads, and this rug is a prime example of the attention that goes into every part of our process.

Hand-woven rug in
New Zealand wool on
cotton warp, reversible

90x250 cm
140x200 cm
170x240 cm
200x300 cm
Made to measure



1512 BLACK/BEIGE



1627 GREY/LIGHT GREY

VERONICA

Design / Lisbet Friis



An inviting play with patterns guided by a carefully selected palette of strong calming indigo, deep midnight blue and two shades of moss green and grey with notes of blue and black make this hand-woven rug in New Zealand wool a beautiful design classic. Quietly saluting the Swedish rag rugs, Veronica brings an instant feel of style and comfort to a room. This is a simple, contemporary style with refined pattern and a three-dimensional visual effect thanks to the special Gabbeh-dye technique

Hand-woven rug in
Gabbeh-dyed New Zealand
wool on cotton warp

80x240 cm
140x200 cm
170x240 cm
200x300 cm
Made to measure



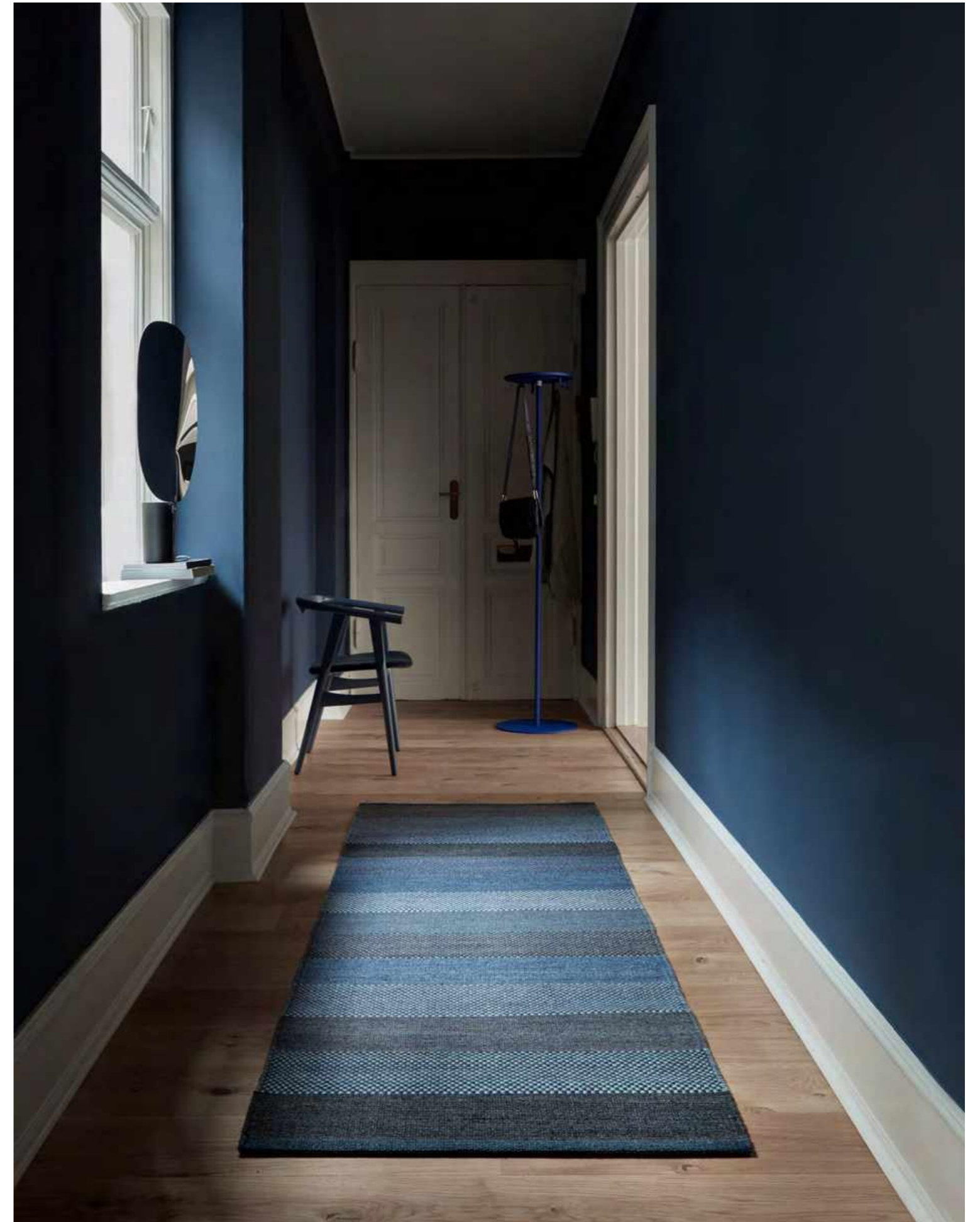
1616 GREY



1818 GREEN



1717 BLUE





POPPY

Design / Lisbet Friis

Fresh colour splashes of yellow and soft blue mixed with beige bring a bit of fun to this thin and tight hand-woven rug in wool and linen. This design is fresh and lights up the room and the neutral base in all three colour variations makes sure it's not too delicate and easy to look after.



3812 LIGHT BLUE/BEIGE



2312 YELLOW/BEIGE

Hand-woven rug in New Zealand wool and linen on cotton warp, reversible.

- 80x240 cm
- 140x200 cm
- 170x240 cm
- 200x300 cm
- Made to measure

NANNA

Design / Jens Landberg Schrøder



The quality of this thick hand-loom pile rug is softer than soft, and the careful merge of three threads gives the surface a natural glowing finish. With a saturated warm colour palette of charcoal, warm grey, light grey and ultimate durability, the Nanna rug will bring long-lasting joy in any home.



1414 CHARCOAL



1616 WARM GREY



2727 LIGHT GREY

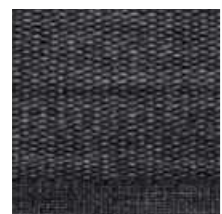
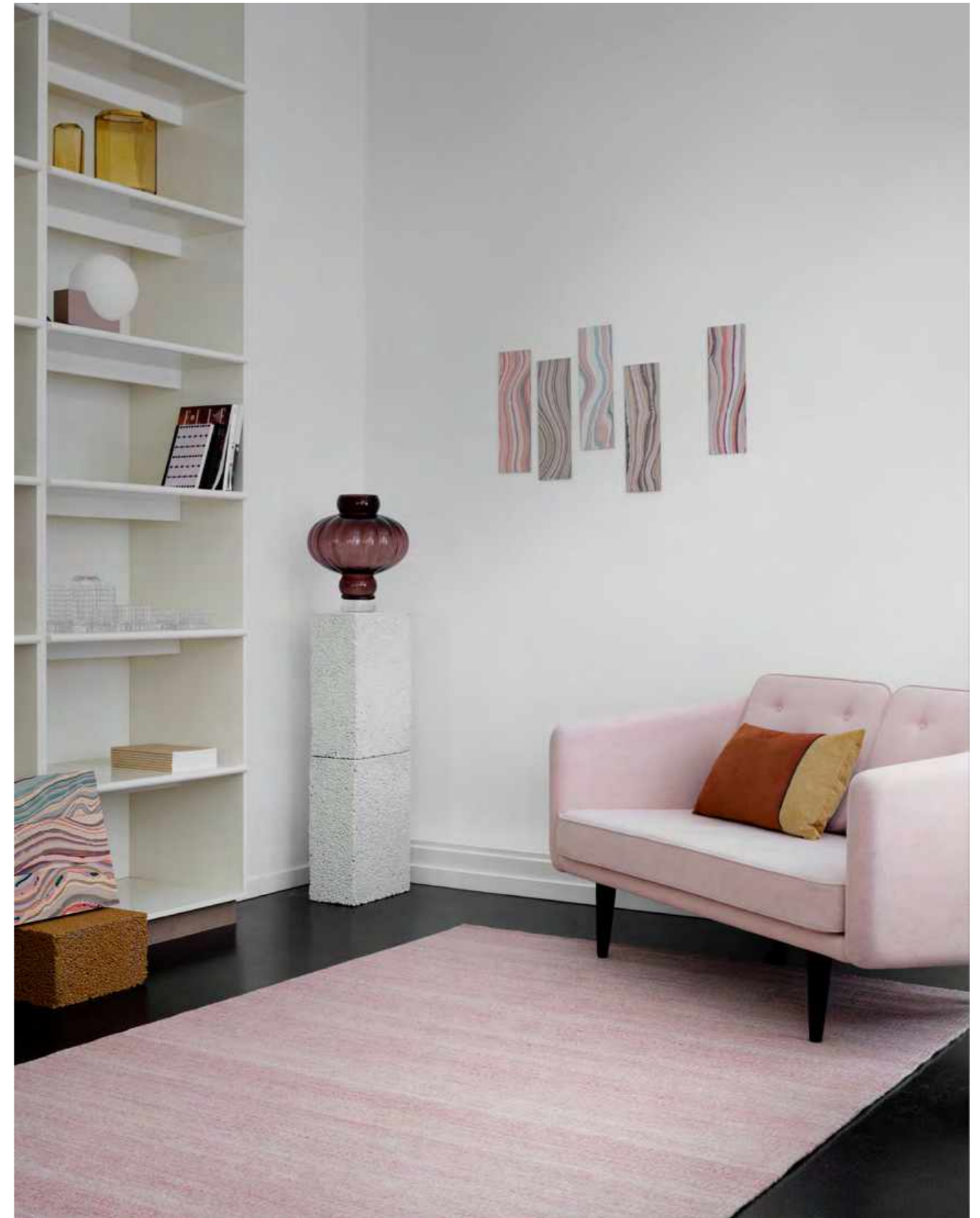
Hand-loom pile rug
in New Zealand wool
on cotton warp

170x240 cm
200x300 cm
250x350 cm
Made to measure

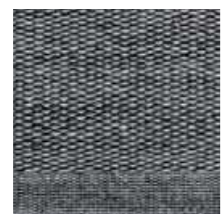
BELLIS

Design / Lisbet Friis

Bellis is the new generation of Erica; a thicker, reversible rug in Gabbeh-dyed New Zealand wool available in four different colours resembling the changes of the sky throughout a day. From soft, beautiful nude like a rose quartz gemstone to a twilight charcoal grey. All very different colours yet they all have the same depth and tone and work harmoniously together in a room or throughout the house. Up close, the weave reveals tiny dots bringing out the beauty in the colours, which from a distance blur together into a more monochrome shade.



1416 CHARCOAL/GREY



1427 CHARCOAL/LIGHT



3011 ROSE/OFF WHITE



3811 LIGHT BLUE/OFF

Hand-woven rug in
Gabbeh-dyed New Zealand
wool on cotton warp, reversible

140x200 cm
170x240 cm
200x300 cm

Made to measure

FRIDA

Design / Jens Landberg Schrøder



The beauty is in the fine details of this high-quality hand-loom pile rug. Combining wool in the best quality, a discreet colour palette of beige and grey and a neutral style, Frida is pure simplicity at its best. The special weaving technique allows natural ventilation under the rug.



1212 BEIGE



1616 GREY

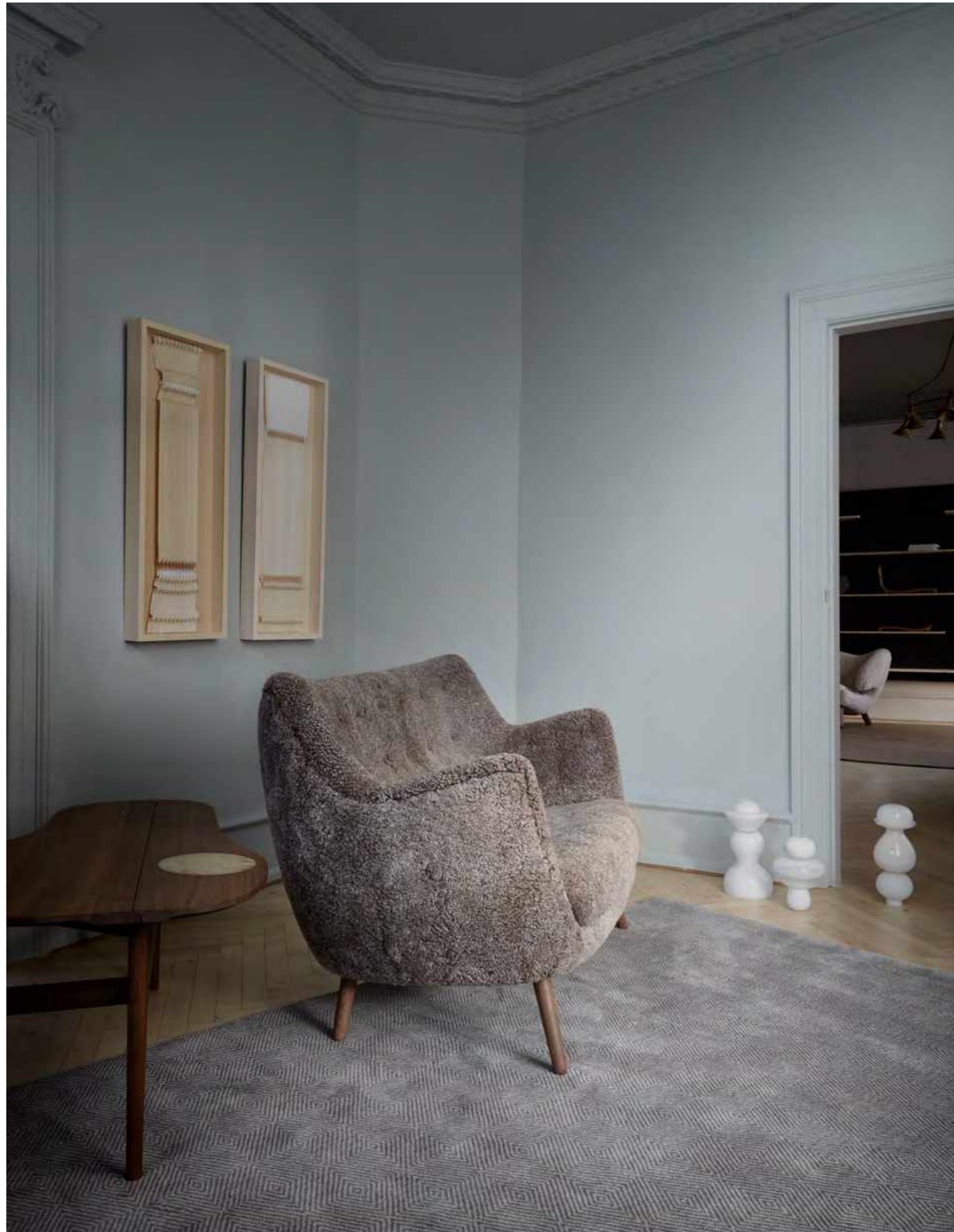
Hand-loom pile rug
in New Zealand
wool on cotton warp

170x240 cm
200x300 cm
240x240 cm
250x350 cm
Made to measure

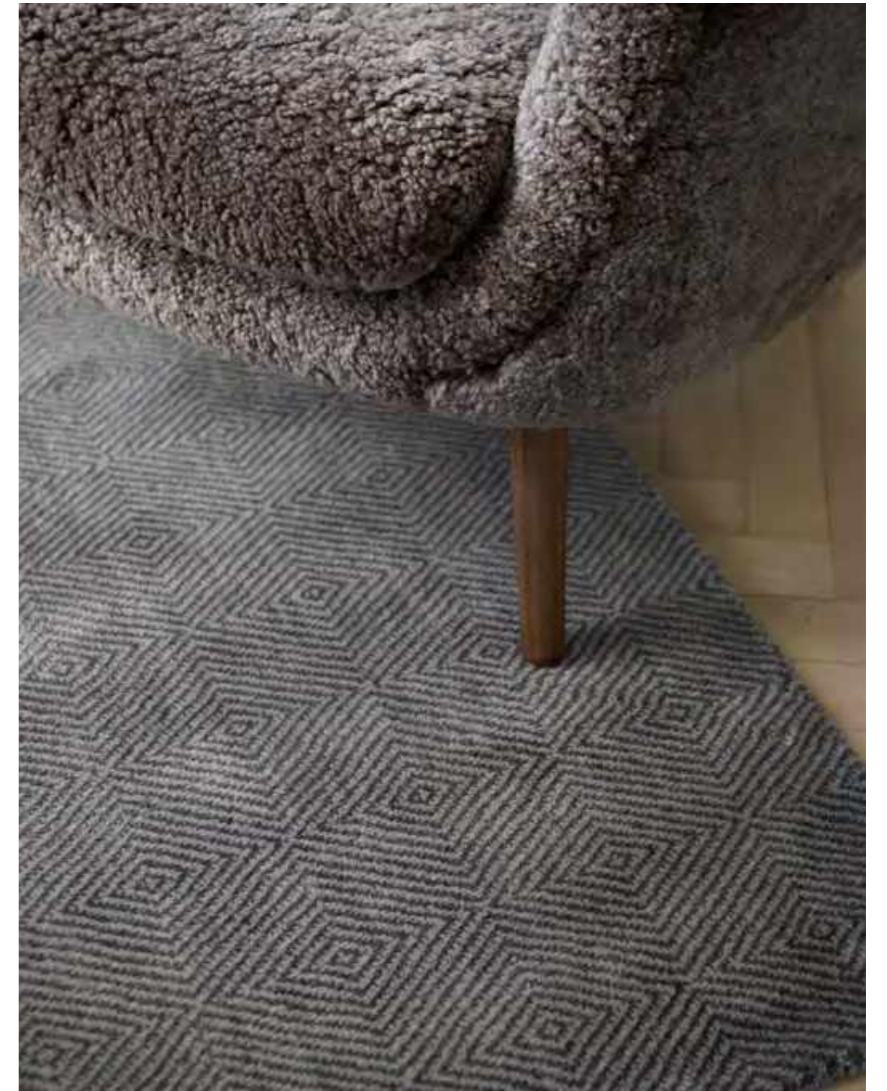


GISLI

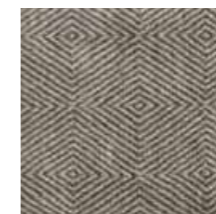
Design / Jens Landberg Schrøder



The impeccable finish, the tone-in-tone shades and a stunning diamond pattern make Gisli a rug with a tactile feel bringing an extra touch of exclusivity to most interior. Hand-loomed in the best New Zealand wool on cotton warp for extra quality, this pile rug is classic with an intriguing twist and comes in saturated charcoal and warm grey.



1414 CHARCOAL



1616 WARM GREY

Hand-loom pile rug
in New Zealand wool
on cotton warp

170x240 cm
200x300 cm

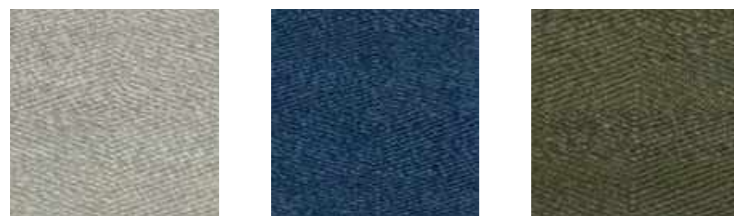
Made to measure

RUNE

Design / Jens Landberg Schrøder



There is an understated luxury in this hand-woven rug made from high-quality wool in beautiful indigo, grey and forest green with a slight golden tone. Up close the tight weave reveals a discreet diamond pattern as a result of a complicated weaving technique and a meticulous process, where the wool has been hand-spun with several threads.



1616 GREY

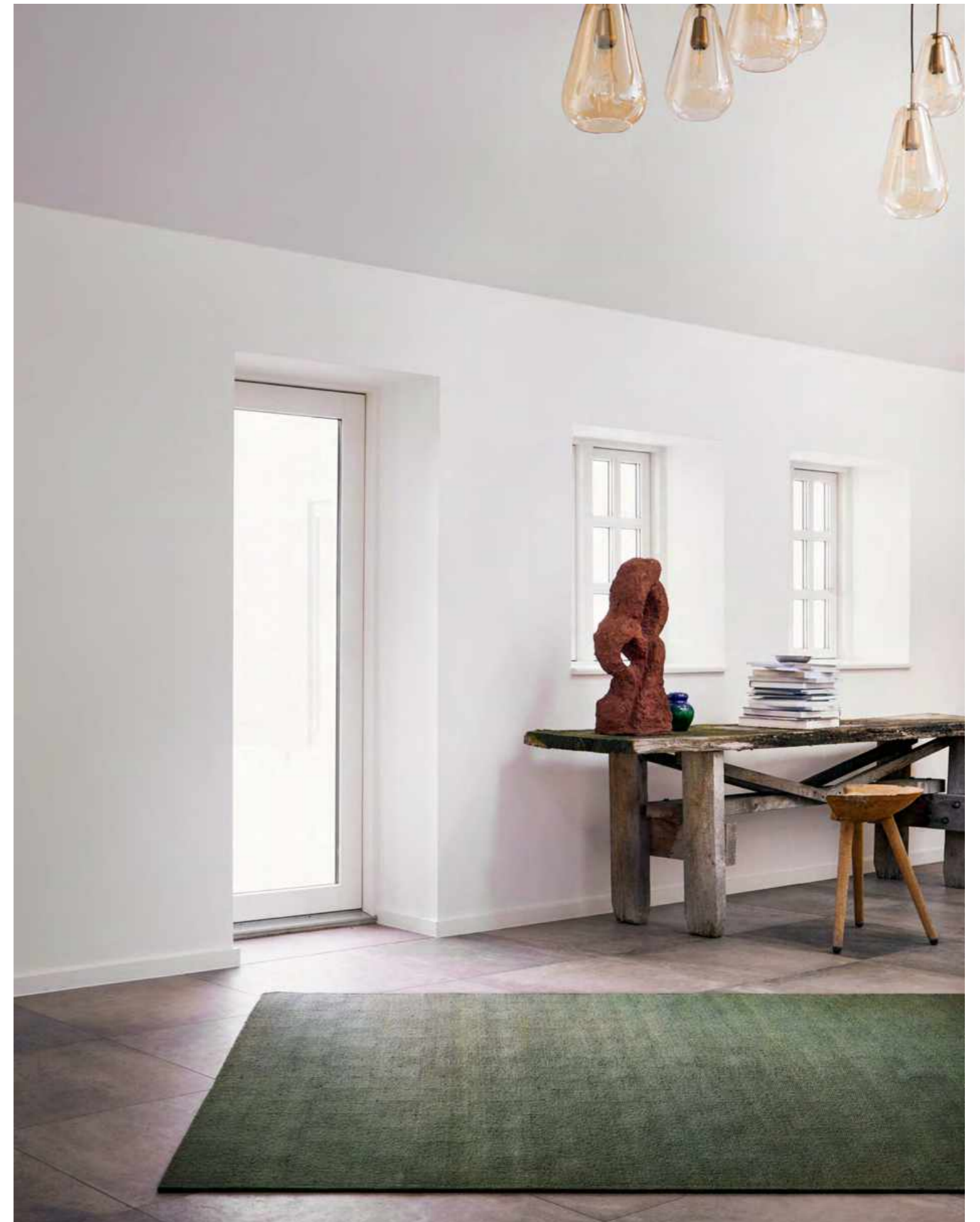
1717 INDIGO

1818 FOREST

Hand-woven rug
in New Zealand wool on
cotton warp, reversible

140x200 cm
170x240 cm
200x300 cm
250x350 cm

Made to measure







NJORD

Design / Jens Landberg Schrøder

Njord is a versatile, understated, and undeniably Scandinavian kilim rug available in four colour combinations, all leaning towards a calm, natural muted palette of silvery and greyish tones. Using the special Gabbeh-dye technique, only partly dyeing the yarn, gives a lively flare to the striped design, which is elegantly finished off with bluish grey fringes. The fine weaving technique makes the rug reversible.



Hand-woven rug in
New Zealand wool on
linen warp, reversible

140x200 cm
170x240 cm
200x300 cm
250x350 cm
Made to measure



1415 CHARCOAL/BLACK



1610 GREY/WHITE



2710 LIGHT GREY/WHITE



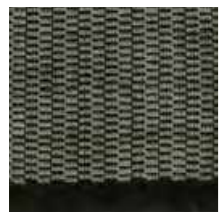
2715 LIGHT GREY/BLACK

GRO

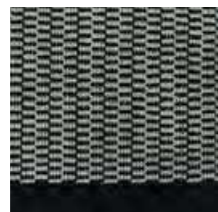
Design / Jens Landberg Schrøder



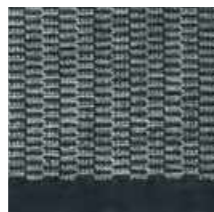
Graphic shapes paired with off white and beige and natural contrast colours form a stunning pattern framed with a simple edge. The fairly complicated pattern on this hand-loom pile rug has required next level craftsmanship. The top-quality New Zealand wool has been woven and cut to create a shimmering look changing with the light.



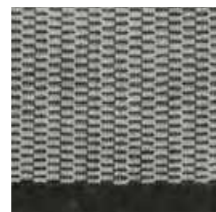
4712 OLIVE/BEIGE



1511 BLACK/OFF WHITE



4812 PETROL/BEIGE



1611 GREY/OFF WHITE

Hand-loom pile rug
in New Zealand wool
on cotton warp

170x240 cm
200x300 cm
250x350 cm

Made to measure



FELICIA

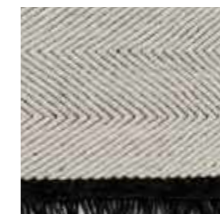
Design / Lisbet Friis



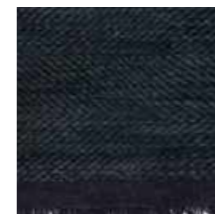
With the traditional herringbone pattern enlarged and embedded in the design, Felicia showcases beautiful craftsmanship. The darker shade on the linen warp makes the pattern stand out in this hand-woven kilim rug finished off with graphite fringes. Felicia infuses any space with its relaxed and simple, elegant look in four muted, natural off white and greyish hues.

Hand-woven rug
in New Zealand wool
on linen warp, reversible

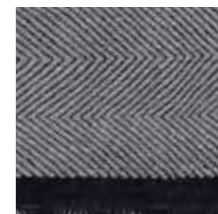
140x200 cm
170x240 cm
200x300 cm
Made to measure



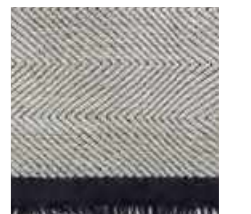
1111 OFF WHITE



1414 GRAPHITE



1616 GREY

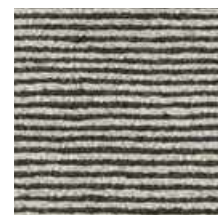


2727 LIGHT GREY

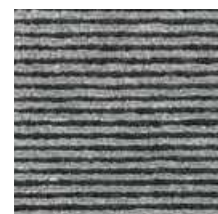
ODIN

Design / Jens Landberg Schrøder

Using old Nepalese techniques this thick pile and loop rug has been hand-knotted in New Zealand wool and linen and some of the loops have then been cut creating the unique surface. The signature blend of quality yarn makes Odin a classic in our collection and the gentle two-toned shimmering softens the graphic look.



1214 BEIGE/CHARCOAL



1615 GREY/BLACK

Hand-knotted pile rug
in New Zealand wool and
linen on cotton warp

170x240 cm
200x300 cm
Made to measure



CALLA

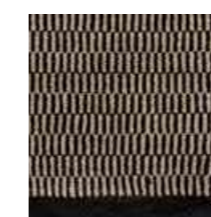
Design / Lisbet Friis



Calla is a posh, yet ultra-modern hand-loom pile rug balancing elegance and functionality. Drawing subtle inspiration from oriental rugs, it has a lustrous and lively patterned surface, which appears calm thanks to the quality of wool and the meticulous mixing of the colours. With midnight blue and beige hinting on silver, this rug brings timeless beauty to a living room and bedroom.



1615 GREY/BLACK



1512 BLACK/BEIGE



1016 WHITE/GREY



1229 BEIGE/MIDNIGHT

Hand-loom pile rug
in New Zealand wool and
viscose on cotton warp

170x240 cm
200x300 cm

Made to measure

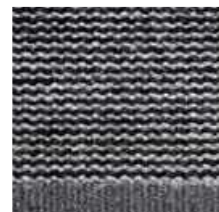
ERICA

Design / Lisbet Friis

The thin stripes and the elegant shimmering created by a special Gabbeh-dye distinguish this subtle playful rug. This technique is also used for the same velvety shades of grey tones featured on the Angelica design making these two different handmade rugs easy to mix for a layered texture in a stylish interior.



1411 CHARCOAL/OW



1516 BLACK/GREY



2711 LIGHT GREY/OW

Hand-woven rug in
Gabbeh-dyed New Zealand
wool on cotton warp

140x200 cm
170x240 cm
200x300 cm
250x350 cm
Made to measure





A rug is an essential layer in a textured mix of raw, honest and natural materials drawing us closer to nature's slow and balanced beauty.



GIMLE

Design / Jens Landberg Schrøder



A shimmering look brings out the two shades creating a stunning visual effect in this popular, classic design Gimle, which is the thickest flat pile rug in the collection. The colour palette draws from Autumnal shades and the Scandinavian natural tones. Soft leaf green, willow, and golden burnt cork harmoniously cover the range of a leaf's natural defoliation. Each shade complements the thick flat pile quality and the stunning two shade mottling effect on the hand-woven rug in New Zealand wool. With six different colour combinations, Gimle is extremely versatile when decorating a home.



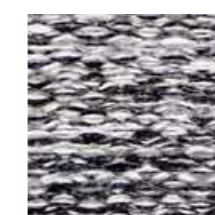
1011 WHITE/OFF WHITE



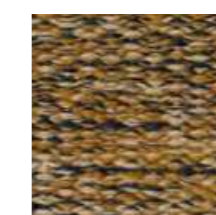
1211 BEIGE/GREY



1215 OFF WHITE/BLACK



1511 BLACK/OFF WHITE



5252 CORK



1818 WILLOW

Hand-woven rug in
New Zealand wool on
cotton warp, reversible

140x200 cm
170x240 cm
200x300 cm
Made to measure

ROLF

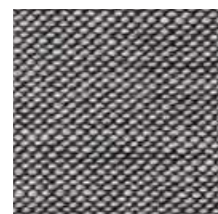
Design / Jens Landberg Schrøder



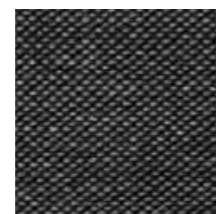
With a clean and simple design and pure wool in its natural white, grey and charcoal hues, this hand-woven rug is a step back to nature. The wool is undyed and the subdued life in the tones and textures comes from nature's own beautiful imperfection. The Rolf rug meets a strong desire for natural and sustainable design. The thick quality makes it a very durable rug with the added bonus of being reversible, which can double the life span.



1112 OFF WHITE/BEIGE



1615 GREY/BLACK



1415 CHARCOAL/BLACK

Hand-woven rug in natural coloured New Zealand wool on cotton warp, reversible

140x200 cm
170x240 cm
200x300 cm

Made to measure



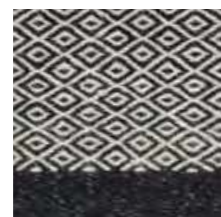
BALDER

Design / Jens Landberg Schrøder

An abundance of beautiful hues inspired by nature add depth to the classic goose eye pattern on this simple and sophisticated, hand-spun rug. Whether choosing the golden honey toned umbra, forest green inspired by crisp beech leaves, classic grey, black and midnight blue, the colours are strong enough to stand out, and soft enough to blend into a natural colour scheme and suit any wooden floor. Mixing high quality wool and linen in a very tight weave deliberately creates a slightly worn surface suggesting that this rug will only become more beautiful with time.



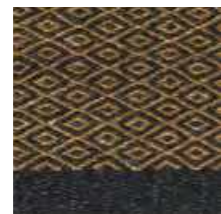
1629 GREY/MIDNIGHT BLUE



1516 BLACK/GREY



1818 FOREST



5252 UMBRA

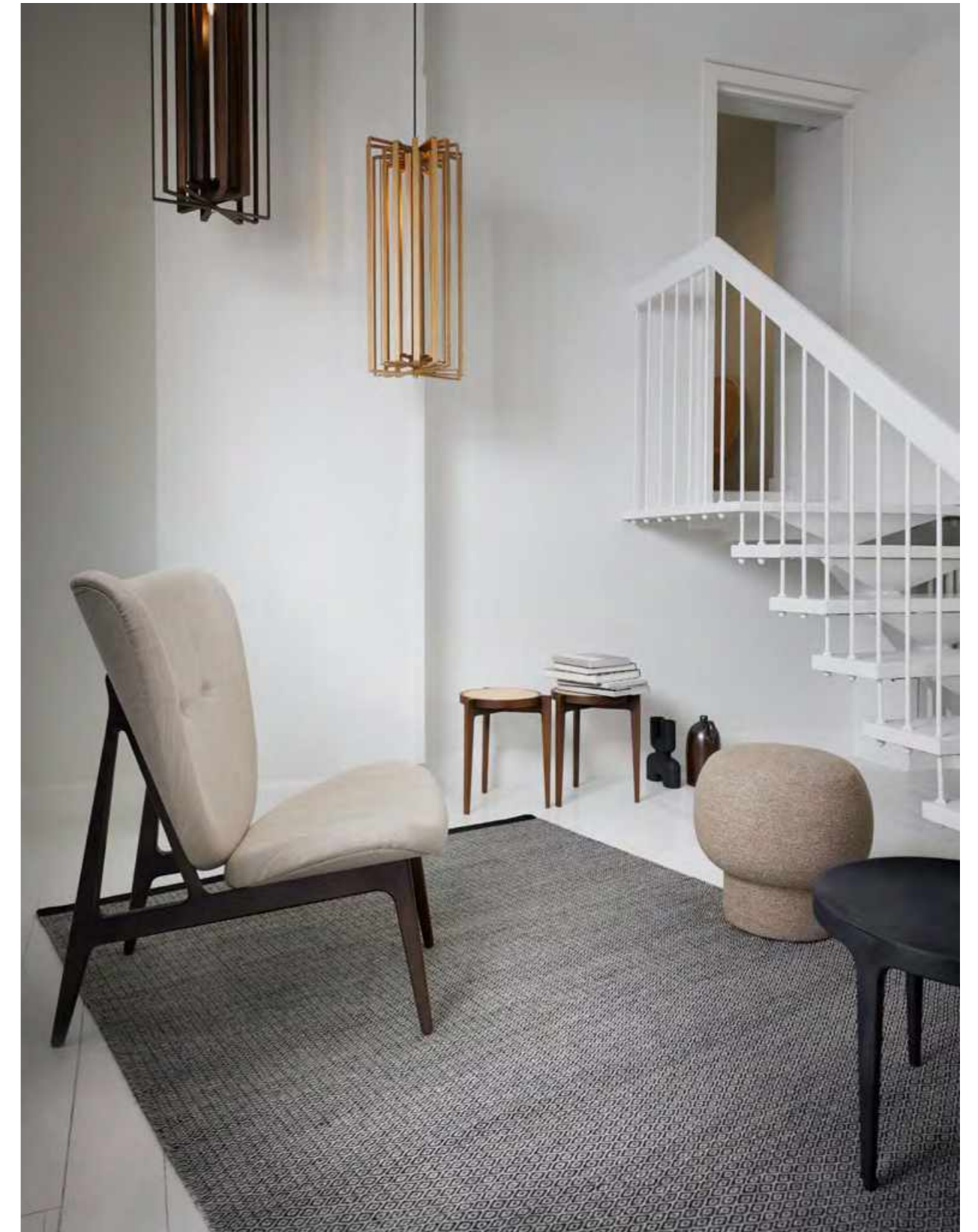


1627 GREY/LIGHT GREY

Hand-woven rug in
New Zealand wool and linen
on cotton warp, reversible

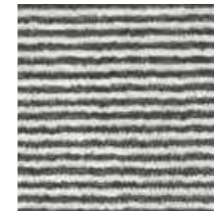
140x200 cm
170x240 cm
200x300 cm

Made to measure

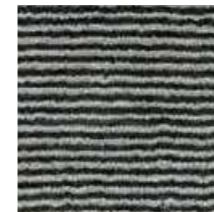


ANGELICA

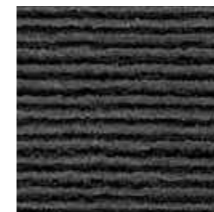
Design / Lisbet Friis



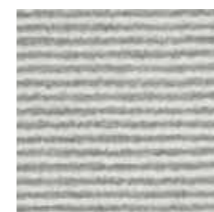
1411 CHARCOAL/OW



1416 CHARCOAL/GREY



1615 GREY/BLACK



2711 LIGHT GREY/OW

Hand-loom pile rug in New Zealand wool and viscose on cotton warp

140x200 cm
170x240 cm
200x300 cm
Made to measure

The combination of viscose mixed with the wool and the beautiful colours created by the special hand dye technique Gabbeh-dye creates a soft shimmer that looks almost like velvet. The Angelica hand-woven rug comes in the same shades of off white, grey and black as Erica. A perfect solution if you want different hand-made rugs in a matching colour scheme.



TANNE

Design / Jens Landberg Schrøder

This reversible hand-woven rug in pure New Zealand wool fuses a simple contemporary pattern, soft colours and exquisite quality. This very durable rug comes in four different colour combinations, blending natural hues.



1016 WHITE/GREY



1610 GREY/WHITE



1510 BLACK/WHITE



1015 WHITE/BLACK

Hand-woven rug in
New Zealand wool on
cotton warp, reversible

140x200 cm
170x240 cm
200x300 cm

Made to measure

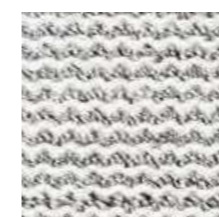


FENRIS

Design / Jens Landberg Schrøder



This slightly rustic hand-woven rug in a thick quality with a soft natural colour scheme is a very harmonic design, complementing different types of wood and styles in a home. The tones and texture come out intentionally irregular thanks to the combination of a shimmering hand-spun natural wool yarn and pure New Zealand wool.



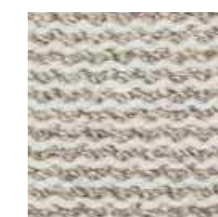
1116 OFF WHITE/GREY



1629 GREY/MIDNIGHT BLUE



1525 BLACK/NATURE



1125 OFF WHITE/NATURE

Hand-woven rug in New Zealand wool and raw wool on cotton warp, reversible

140x200 cm
170x240 cm
200x300 cm
250x350 cm
Made to measure

NEW FREJA

Design / Jens Landberg Schrøder



One of the pure New Zealand wool rugs, hand-woven and made in a classic simple pattern that stands out and also blends in a modern home. The colours are a classic, natural mix of brown, grey and soft natural beige and off white.

Hand-woven rug in
New Zealand wool on
cotton warp, reversible

140x200 cm
170x240 cm
200x300 cm
Made to measure



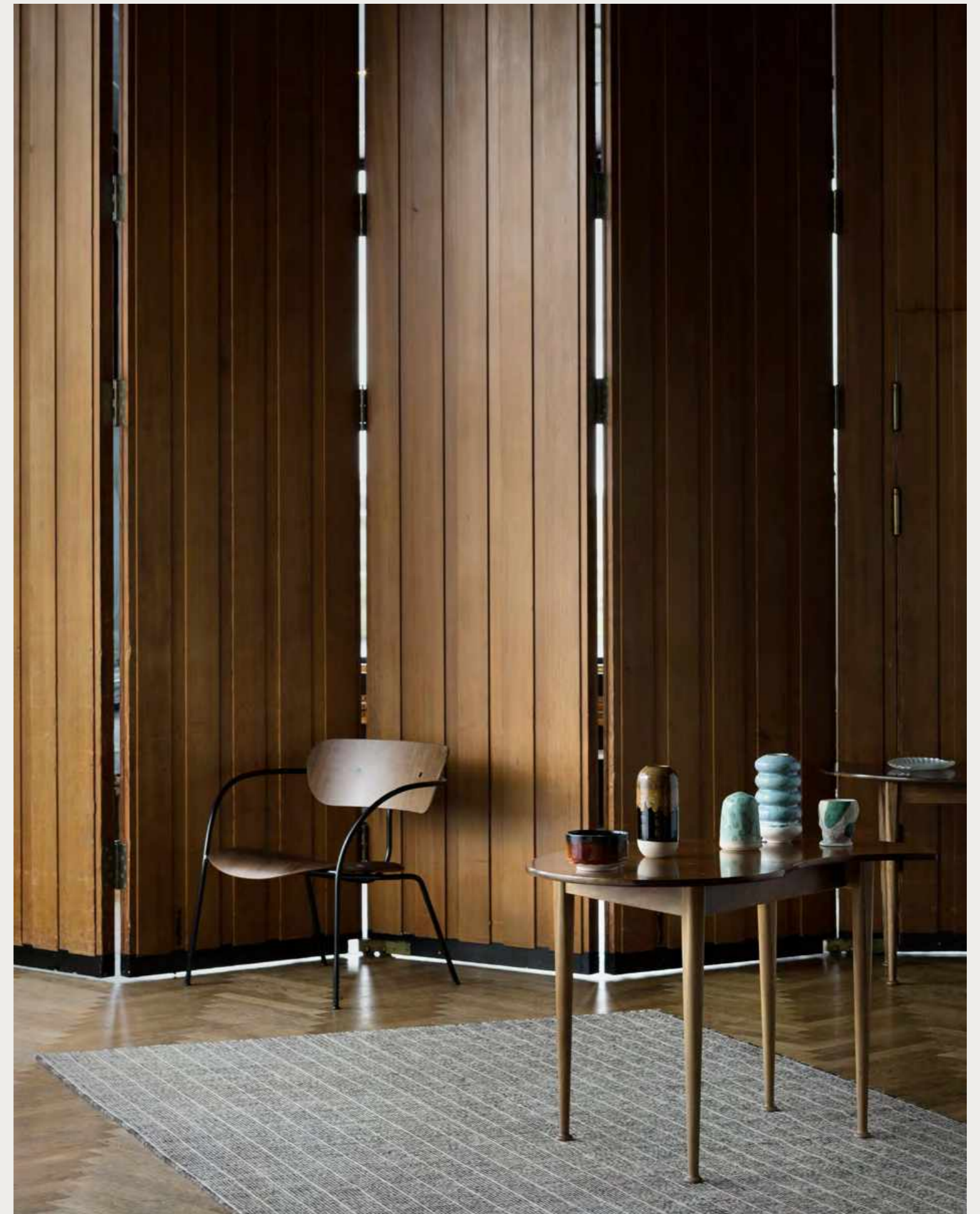
1013 WHITE/BROWN



1025 WHITE/NATURE

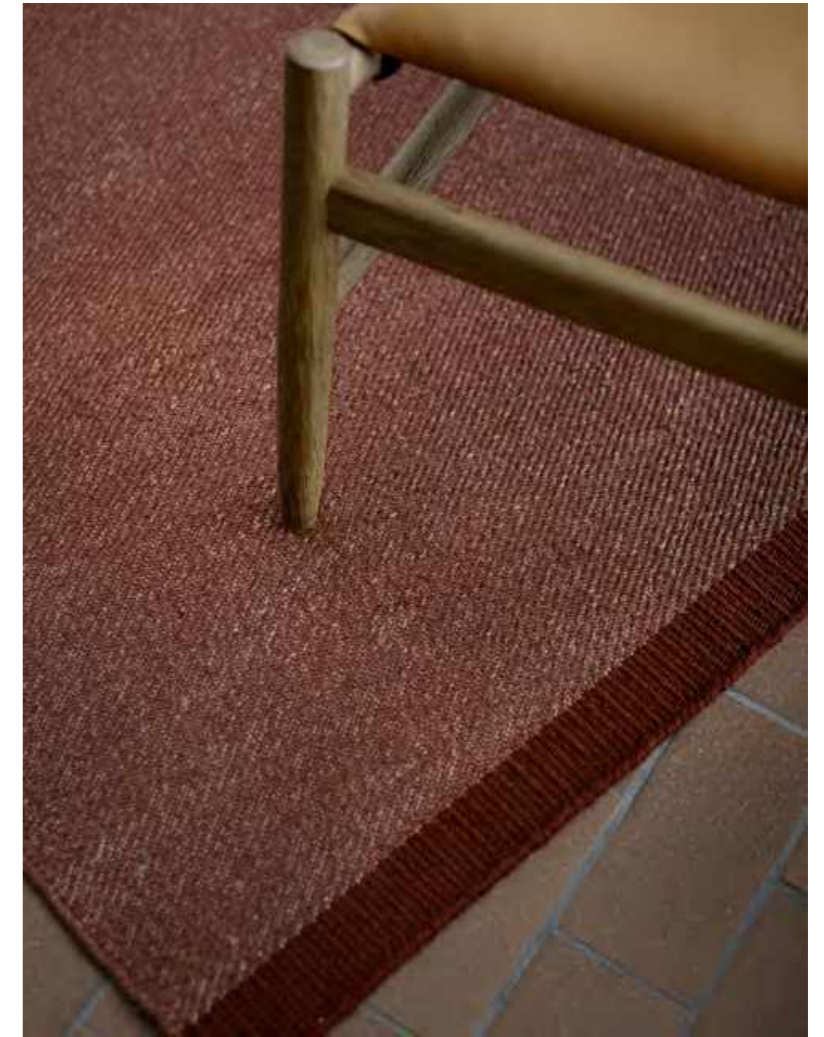


1616 GREY





A mixture of the best quality New Zealand wool and linen on dyed cotton warp gives this hand-woven rug a harmonious three-dimensional surface and adds durability to the list of its many qualities. The elegant design is sharpened by a border complementing the selection of colours - deep glowing amber, lingonberry, aquamarine and two soft natural light colours.



1116 OFF WHITE/GREY



2716 LIGHT GREY/GREY



1717 AQUAMARINE



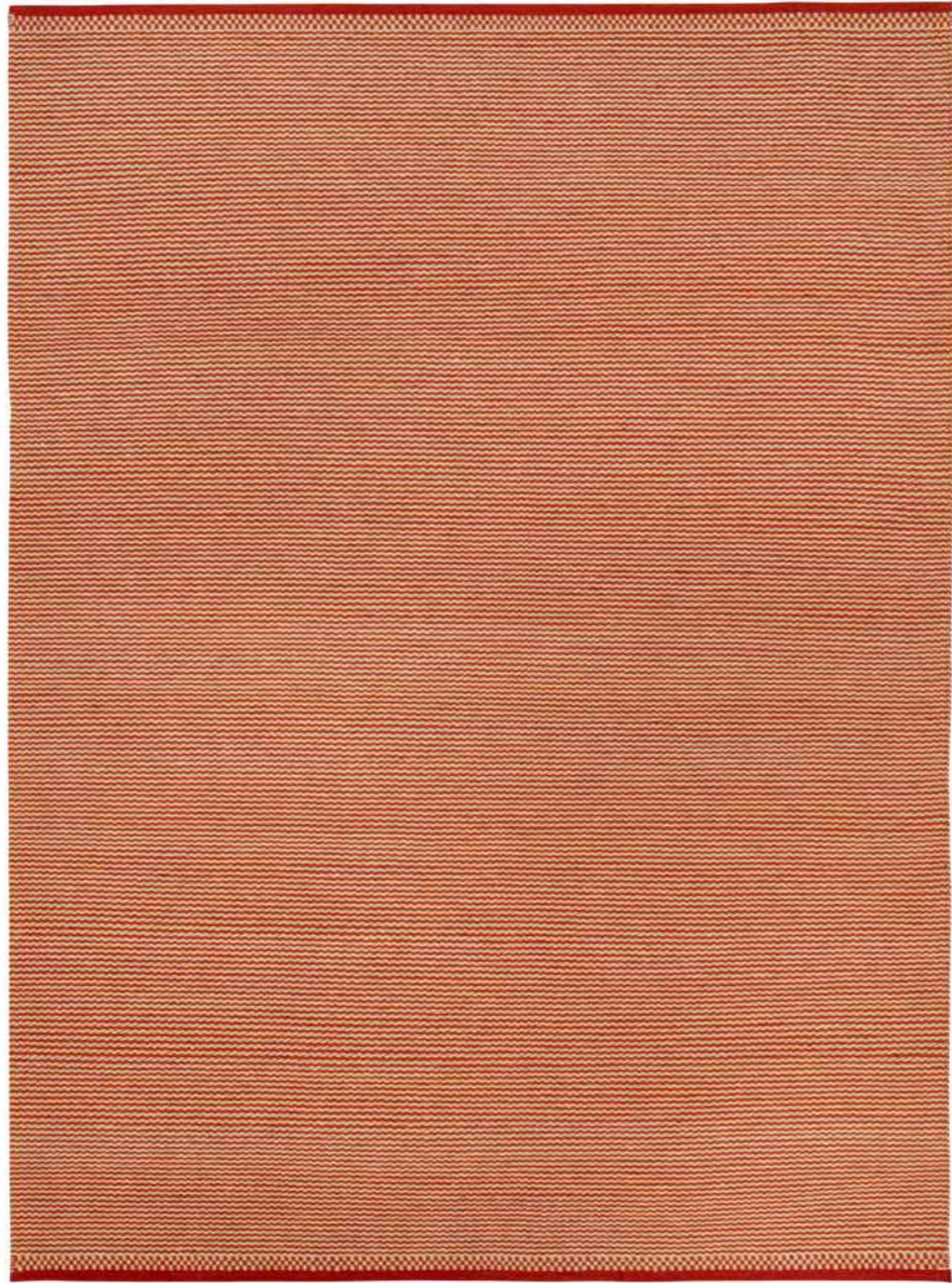
5252 AMBER



3053 LINGONBERRY

Hand-woven rug in
New Zealand wool and linen
on cotton warp, reversible

170x240 cm
200x300 cm
250x350 cm
Made to measure



ASK

Design / Jens Landberg Schrøder

The uniqueness of this hand-loom pile rug stems from a determined process of attention to every single detail. The quality of the New Zealand wool is outstanding and the many experiments mixing wool and a little bit of linen for contrast have resulted in a thicker and more exclusive rug. The linen adds a stylish lustre and a gentle Gabbeh-dye brings the soft shimmering in the pile. The choice of nature inspired colours completes the soft and exclusive design, which is versatile and makes an impact in any room.



1616 GREY



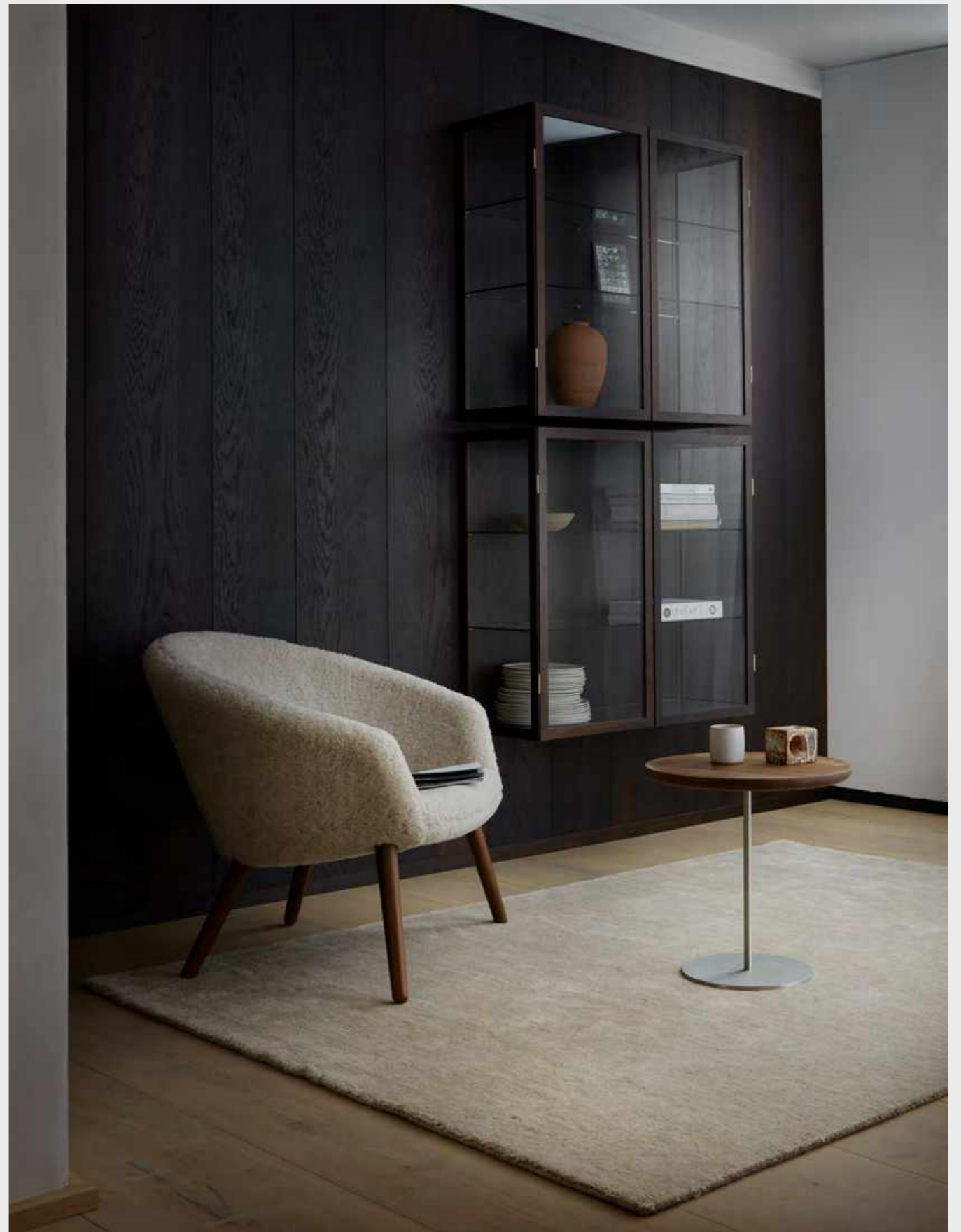
1414 CHARCOAL



1212 BEIGE

Hand-loom pile rug in
Gabbeh-dyed New Zealand wool
and linen on cotton warp

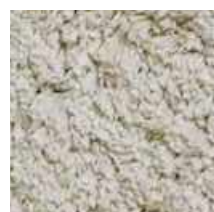
160x230 cm
200x300 cm
Made to measure



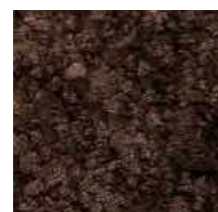
GJALL

Design / Jens Landberg Schrøder

This very thick, pure viscose high-pile rug is the essence of cosy. The three-dimensional shading effect enhances the softness and the expression of colours, which range from subtle neutrals off white, grey, charcoal, petrol green to beautiful shades like pearl, topaz, amber and ruby inspired by nature's precious stones.



1212 BEIGE



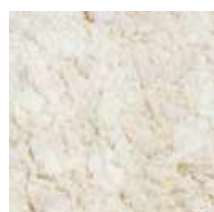
1313 BROWN



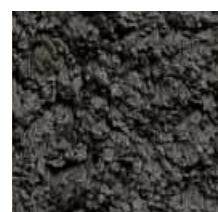
1616 GREY



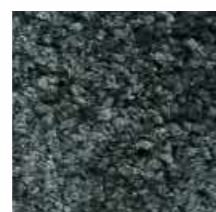
3939 DARK BEIGE



1010 WHITE



1414 CHARCOAL



4848 PETROL

Hand-woven
high-pile rug in viscose
on cotton warp

160x230 cm
200x300 cm
Made to measure



GJALL

Design / Jens Landberg Schrøder



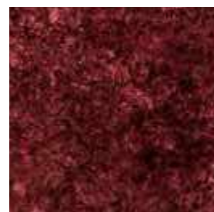
This very thick, pure viscose high-pile rug is the essence of cosy. The three-dimensional shading effect enhances the softness and the expression of colours, which range from subtle neutrals off white, grey, charcoal, petrol green to beautiful shades like pearl, topaz, amber and ruby inspired by nature's precious stones.



5252 AMBER



3030 PEARL



5353 RUBY

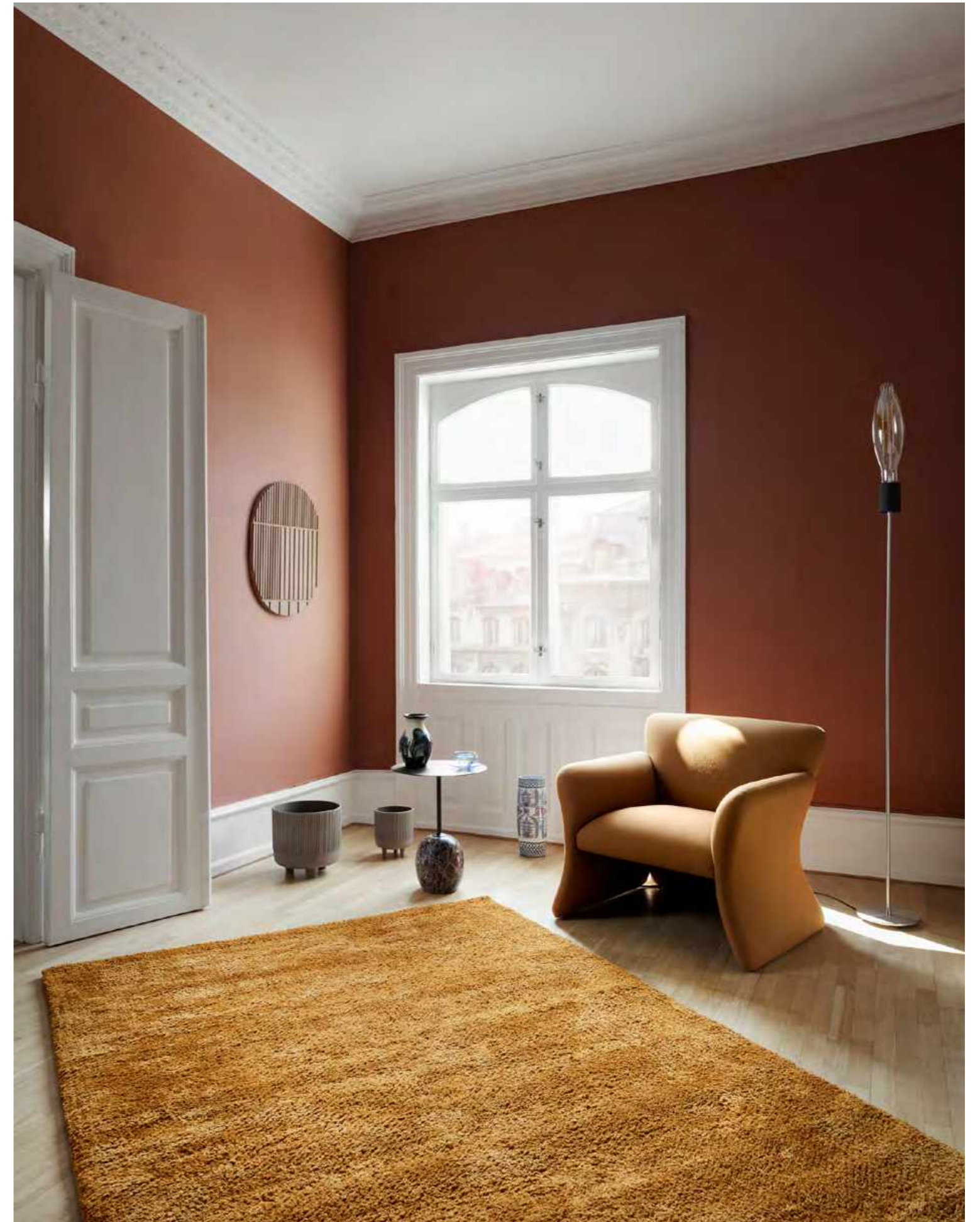


5151 TOPAZ

Hand-woven
high-pile rug in viscose
on cotton warp

160x230 cm
200x300 cm

Made to measure





1111 OFF WHITE

THOR

Design / Jens Landberg Schrøder

Made in the best quality New Zealand wool in a gorgeous off-white, this soft, thick high-pile rug brings a burst of understated elegance into any room. The clean aesthetic makes it a versatile choice.

Hand-woven high-pile rug in New Zealand wool on cotton warp

160x230 cm
200x300 cm
Made to measure

CAMELIA

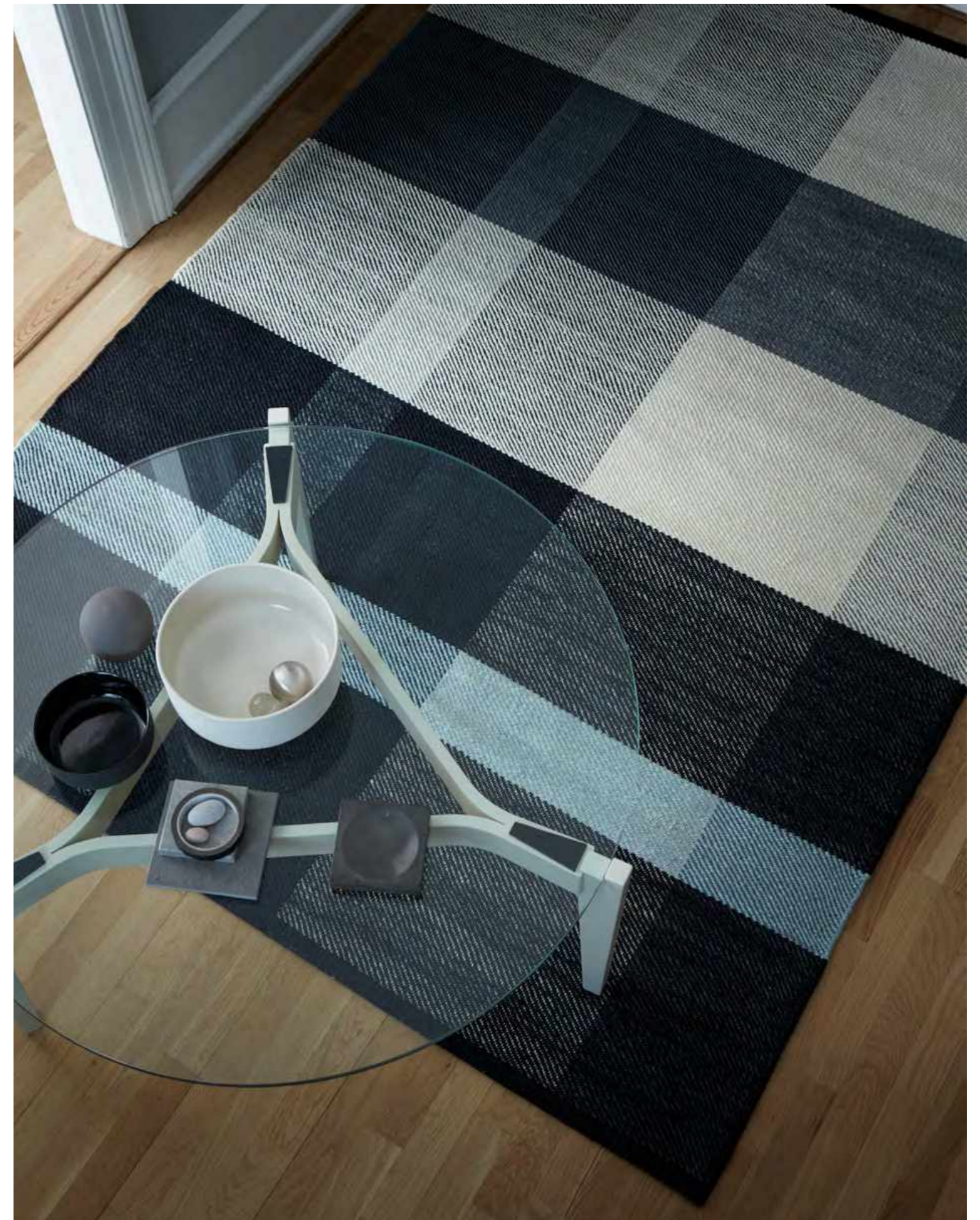
Design / Lisbet Friis

Stunning on its own and a stylish addition in most settings. With the asymmetrical square pattern, this twill-woven rug in New Zealand wool and linen fills a room with a creative graphic pattern and deep stunning colours. These features come from the thick quality of the wool and the refined depth of the linen.



Twill-woven, hand-made
rug in New Zealand wool
and linen

170x240 cm
200x300 cm



LOTUS

Design / Lisbet Friis



With a well-balanced chequer design in a stunning colour range of dark blue, aqua marine, grey and mahogany, the Lotus design introduces a quality that pushes the boundaries. Advanced craftsmanship, techniques and linen blended with the wool have made it possible to create a high quality rug with a three dimensional shimmering surface.



1615 GREY/BLACK



1642 GREY/MAHOGANY



1715 BLUE/BLACK



1742 BLUE/MAHOGANY

Twill-woven, hand-made rug in New Zealand wool and linen

170x240 cm
200x300 cm

Made to measure

LOKE

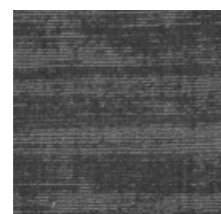
Design / Jens Landberg Schrøder



A modern piled rug, made in the finest New Zealand wool, which has a shiny and intense two-toned shimmer despite being uni-coloured. After weaving, the loops have been partly cut using a shaving technique, which has softened the surface and created the enhanced expression of colours.



2727 LIGHT GREY



1616 GREY

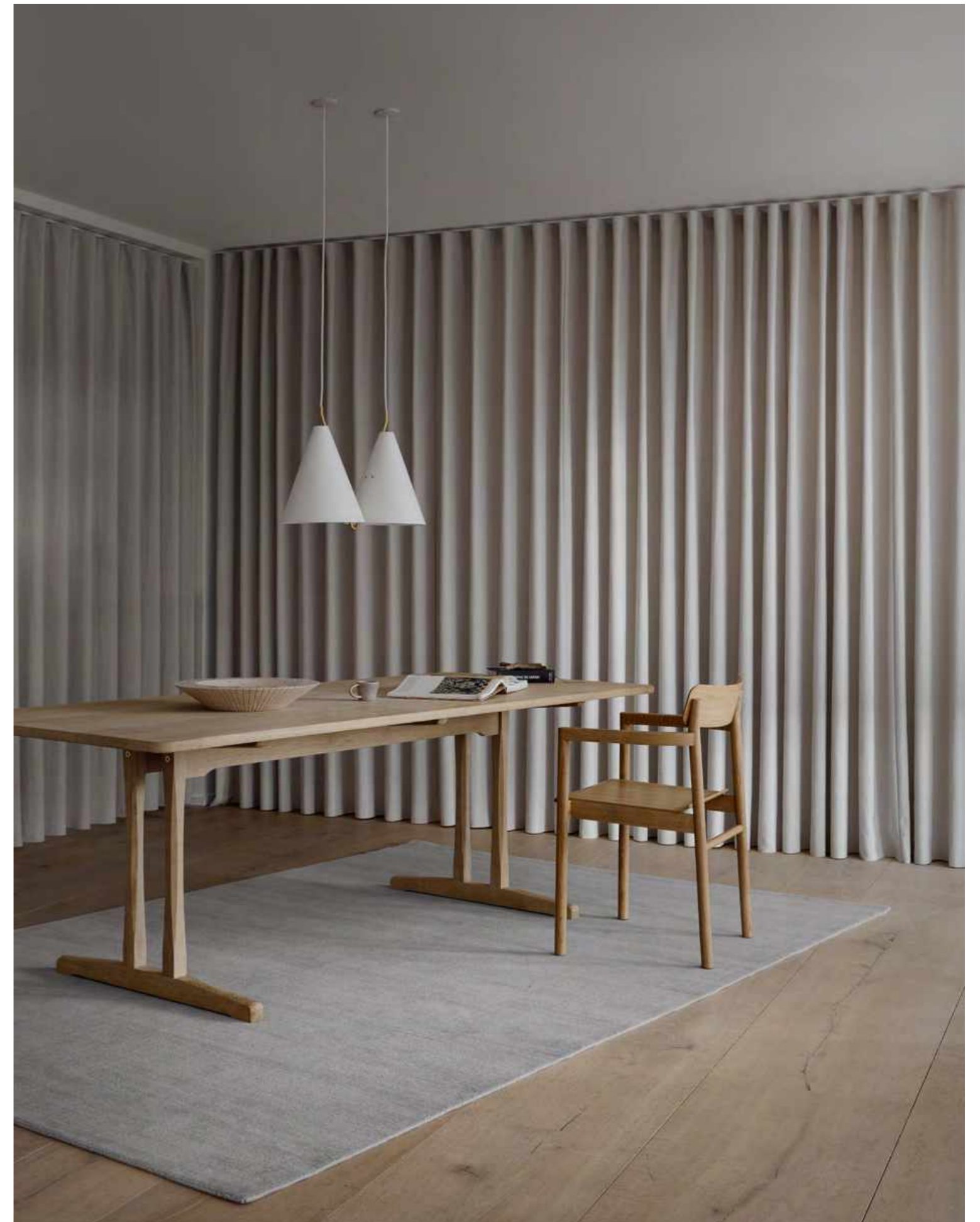


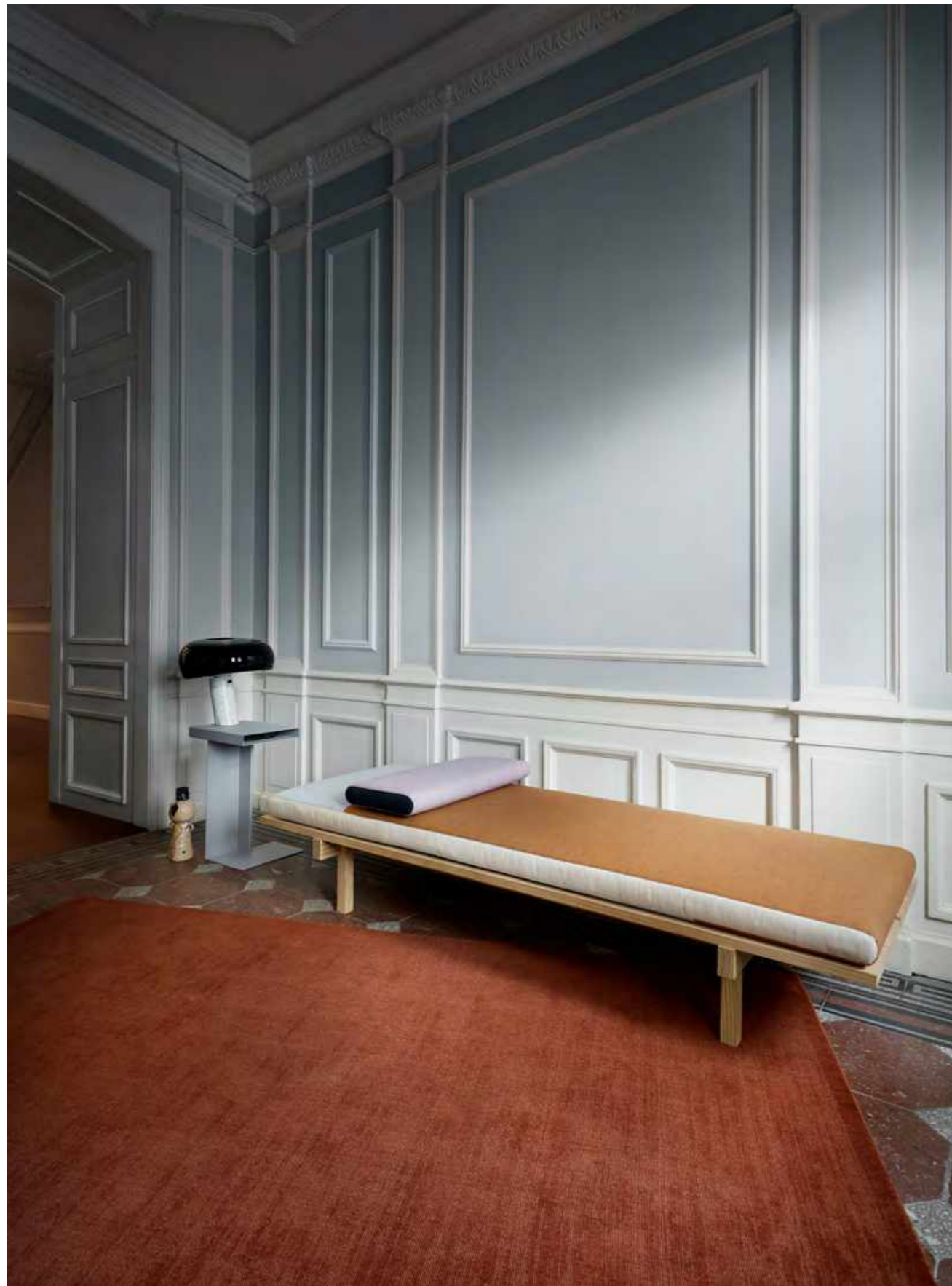
1212 BEIGE

Hand-loom pile rug
in New Zealand wool
on cotton warp

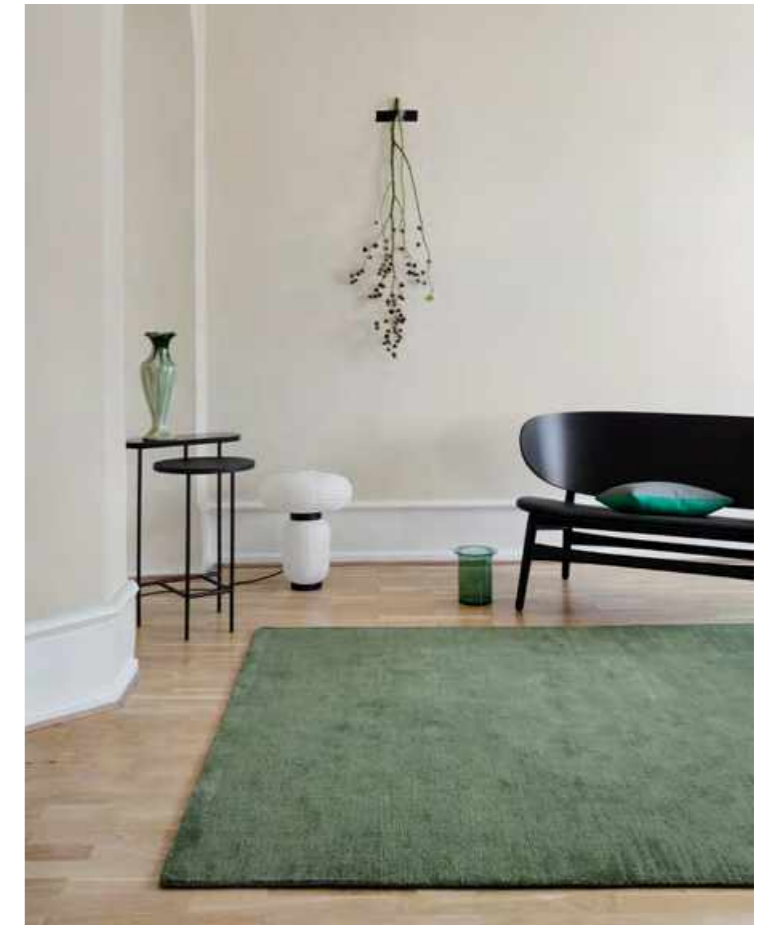
170x240 cm
200x300 cm
250x350 cm

Made to measure





A modern piled rug, made in the finest New Zealand wool, which has a shiny and intense two-toned shimmer despite being uni-coloured. After weaving, the loops have been partly cut using a shaving technique, which has softened the surface and created the enhanced expression of colours.

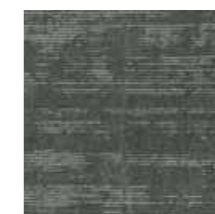


Hand-loom pile rug
in New Zealand wool
on cotton warp

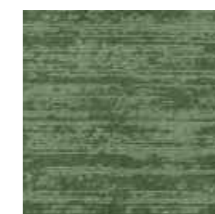
170x240 cm
200x300 cm
250x350 cm
Made to measure



2020 TERRACOTTA



4848 PETROL



3737 DUSTY GREEN



1414 CHARCOAL

LILY

Design / Lisbet Friis



Four exclusive vivacious colours bring a sense of lush fairy tale to the Lily rug, which is woven with the same hand-loom pile technique as Loke. Lisbet Friis has added her signature touch and created soft harmony and contrasts with stripes. The wool piles have been cut in a special way creating an effect of changing the shine and texture depending on how the light falls on the rug. The Gabbeh-dye enhances the rich natural colours.

Hand-loom pile rug in
Gabbeh-dyed New Zealand
wool on cotton warp

170x240 cm
200x300 cm
Made to measure



1414 SMOKE



2929 NIGHT SKY



1212 MARBLE



1919 ORIENTAL RED

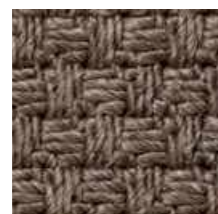
MUNIN

Design / Jens Landberg Schrøder

Made with our uncompromising approach to craftsmanship, the Munin rug meets the highest standards of durability and aesthetics. The range of nature's own tones such as driftwood, stone, forest, and pinewood harmoniously complement the surroundings and create a cosy and elegant update to any outdoor space. By adding viscose to the mix of man-made textile fibres, the simple, rustic design stands out with a subtle shine. The good quality and the precise weave make the rug easy to keep and resistant to water and sunlight. The design also adds a feeling of comfort and definition to a conservatory, or works perfectly as a stylish and practical choice for a kitchen or dining room.



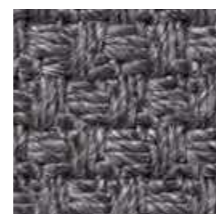
1212 DRIFTWOOD



1313 PINEWOOD



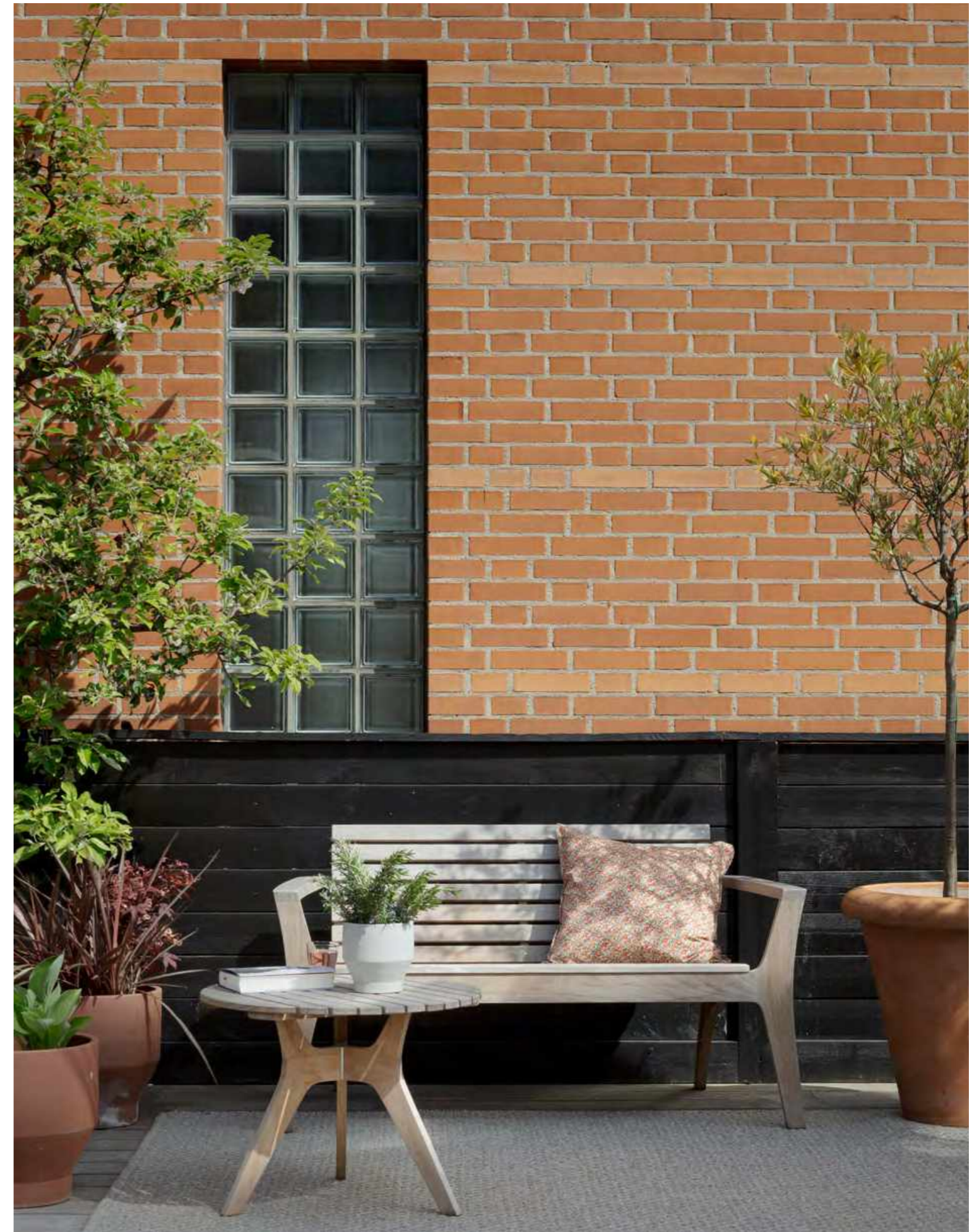
1818 FOREST



1414 STONE

Hand-woven in- and outdoor rug in polypropylene, polyester and viscose

200x300 cm
250x350 cm



HUGIN

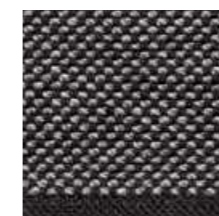
Design / Jens Landberg Schrøder



With a perfect blend of high quality and clean, simple style, the Hugin rug can transform a balcony or terrace to a cosy outdoor living room. It's available in a range of natural colours and hand-woven with an advanced mix of man-made textile fibres making it durable enough to withstand water and sunlight. This rug is slightly finer than the more rustic sister design, Munin, and has discreet two-toned pattern. The design also adds a feeling of comfort and definition to a conservatory, or works perfectly as a stylish and practical choice for a kitchen or dining room.



1213 SAND/STONE



1516 BLACK/GREY



1518 BLACK/FOREST



1548 BLACK/OLIVE

Hand-woven in-and outdoor rug in polypropylene, polyester and viscose

200x300 cm
250x350 cm

MADE TO MEASURE

The perfect rug is a combination of beautiful texture and distinctive pattern with rich colours or earthy natural tones that accentuate and complement the style in your home.

We have found that the right fit makes all the difference and knowing that a rug has the power to transform a room, we offer most of our designs in bespoke sizes.

When you are looking to link together your sofas, need a little elegant square in a particular place or would like to fit your dining table and chairs on a rug without it looking cramped, you can order most of our rugs in your desired size.

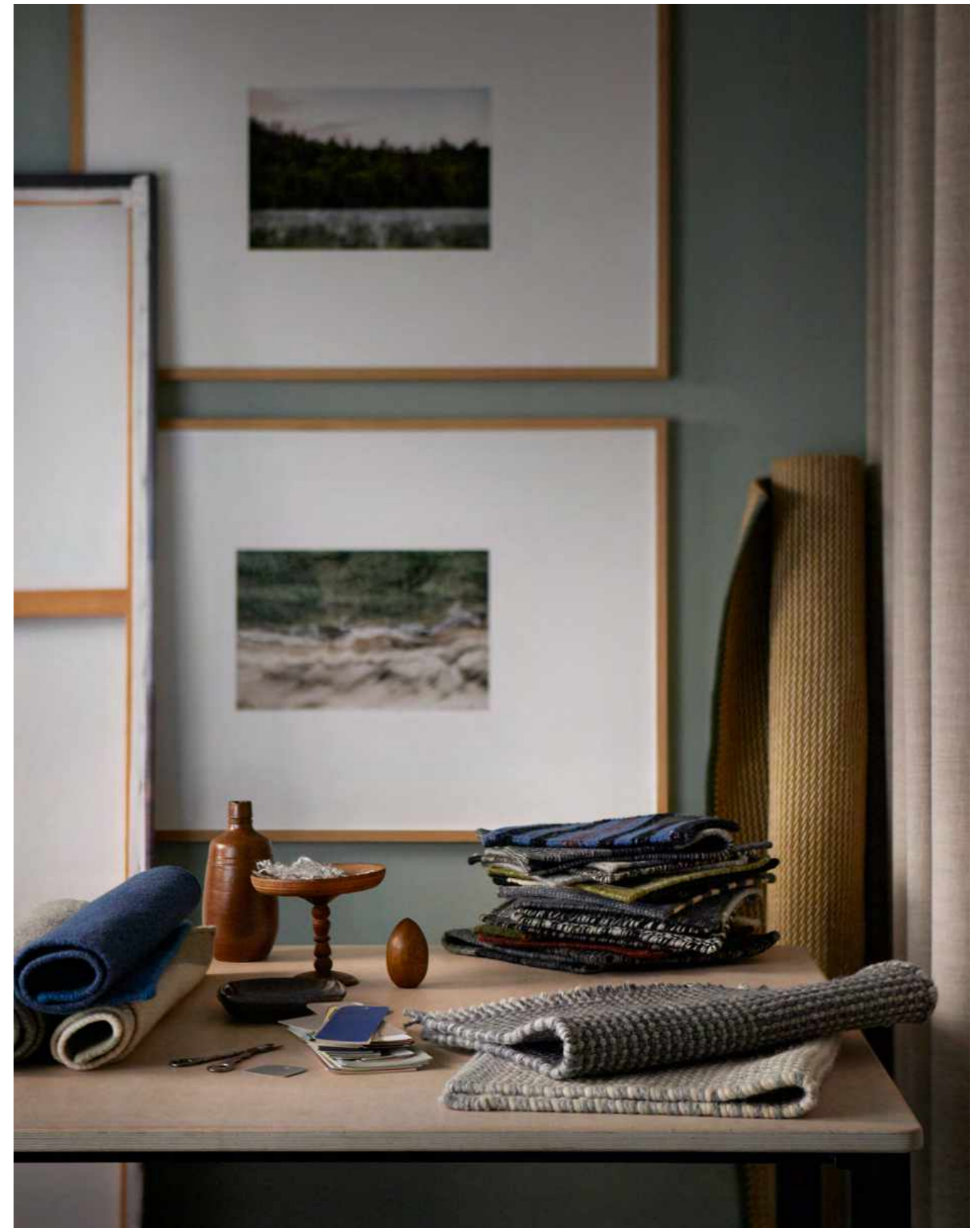
Our designs can be varied in measurement, from a small 2 m² rug, to larger rugs up to 4.5 m wide and 10 metres in length. If the space needs a soft contrast, we can also make selected lines as circular rugs, which can make a room seem more spacious. We are dedicated to perfecting, refining and adding on to our selection of classic, contemporary designs and when it comes to size, we offer even more choices and flexibility.

If you need the perfect rug to fit a specific spot in your home, we have a made to measure service available for the majority of our designs.

As all our rugs are unique and hand-made, the size can vary slightly from the ordered size (+/-4%). A bespoke rug can be delivered in approximately four months. For a surcharge it's possible to get delivery in just 10 weeks.

Please note, that you will be invoiced for a minimum of two m² if you order a smaller rug. For circular rugs an additional 15% will be added to the fee.

Some of our designs are unavailable as circular rugs or in the largest sizes (4.5x10 m), however please contact us with any requests.



SIZE GUIDE

A guide to help you choose the perfect size rug

Choosing the right size rug can be confusing and many have a tendency to pick a rug that is too small. Scrimping on the size can actually make a room look smaller, crowded, and cramped. As a general rule, bigger is better; a larger rug will make the room look bigger and more sophisticated.



Sofa area

A rug is like a focal point, an anchor in your room, and there are a few things to consider when creating the right ambience and look in the living room.

Choose a statement rug that covers an ample part of the floor around the sofa. As a guide line make sure the rug extends 30 cm to either side of the sofa and at least half way under the sofa.

Chunkier arm chairs should be fully on the rug or just off the rug without leaving a gap between the furniture and the rug.

Avoid a rug that only covers the floor around a coffee table and keep side tables either on or along the edge of the rug for a cleaner look. Lighter arm chairs can be partly on the rug.

Depending on the style, you can also choose to place the rug diagonally and partly under the sofa and chairs for a more casual,



Bedroom

In the bedroom, a rug is an important part of the cosy, calming ambience, and there are different ways to play around with the look.

For a more classic look, place the bed and side tables fully on the rug. Choose a large rug providing comfortable, softness to step onto on either side of the bed.

For a more contemporary look, the rug can be placed partly under the bed. Make sure to create symmetry all the way around.



Dining area

When it comes to a rug under the dining table, practicality is as important as the look. If the rug is too small, the legs of the chairs will get caught and make the rug bulge. As a guide line, include 65 cm extra to allow space to comfortably pull out the chairs.



UNDERLAY

Structure: PES/Glass fibre yarn coated on both sides with a special anti-slip PVC-foam.

High quality underlay avoids rugs from slipping on smooth floors. The underlay is comfortable to walk on, offers impact sound insulation and protects your rug from premature wear. If flooring is treated with water-based lacquers, allow at least 3 months full drying time before using this product. Only suitable on floorings treated with solvent-free sealants. No adhesion when wet. Thickness app. 2.5 mm.

90x240, 130x190, 165x240, 190x290, 240x340 cm



HOW TO CARE

We always recommend that you use an underlay to extend the life of your rug.

Underlay ensures that the rug remains in a fixed position. It also reduces the risk of any staining. Some of our kilim rugs are reversible. We recommend that you turn your rug over every six months.

Do not place your rug in direct sunlight. Irregularities in size, colour and weaving are characteristics of hand-made rugs.

Daily cleaning:

Vacuum your rug as needed. Never vacuum your rug with the brushes of your vacuumcleaner nozzle in the extended position.

You can also give your rug a gentle shake outside. Do not beat your rug.

Spot cleaning:

Please find detailed information at fabulaliving.dk

Most of our rugs are hand-made and there is a variation of size of up to +/-4%. Irregularities in colour and weaving are characteristics of hand-made rugs.



CERTIFICATES



BS EN 13501-1 BFL-S1



BS EN 14215
CLASS 22 GENERAL
DOMESTIC USE



BS EN 14215
CLASS 23 HEAVY
DOMESTIC USE

ANGELICA
BALDER
BELLIS
CALLA
CAMELIA
DAISY
ERICA
FELICIA
FENRIS
FLEUR
GIMLE
GISLI
GRO
LOKE
LOTUS
NEW FREJA
NJORD
POPPY
ROLF
ROSEMARY
RUNE
TANNE
VERONICA
UNA

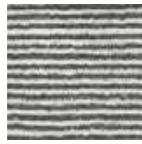
ANGELICA
CALLA
CAMELIA
FENRIS
GIMLE
GISLI
GRO
LOTUS
ROLF

BALDER
BELLIS
DAISY
ERICA
FELICIA
FLEUR
NEW FREJA
NJORD
POPPY
ROSEMARY
RUNE
TANNE
VERONICA
UNA

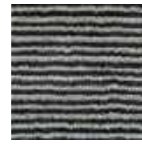
We accept no liability for designs, sizes and colours that are no longer available. We accept no liability for any inaccuracy in terms of colour reproduction in the catalogue. Most of our rugs are hand-made and there is a variation of size of up to +/-4%. Irregularities in colour and weaving are characteristics of hand-made rugs.

ANGELICA

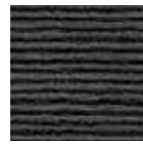
140x200, 170x240,
200x300 cm
Made to measure
Page 58



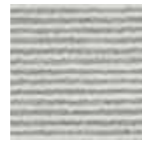
1411 CHARCOAL/OW



1416 CHARCOAL/GREY



1615 GREY/BLACK



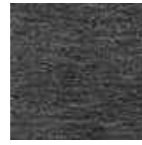
2711 LIGHT GREY/OW

ASK

160x230, 200x300 cm
Made to measure
Page 70



1616 GREY



1414 CHARCOAL



1212 BEIGE

BALDER

140x200, 170x240,
200x300 cm
Made to measure
Page 56



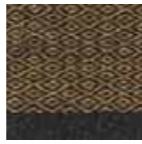
1629 GREY/MIDNIGHT



1516 BLACK/GREY



1818 FOREST



5252 UMBRA



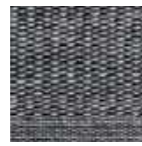
1627 GREY/LIGHT GREY

BELLIS

140x200, 170x240,
200x300 cm
Made to measure
Page 28



1416 CHARCOAL/GREY



1427 CHARCOAL/L GREY



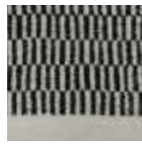
3011 ROSE/OFF WHITE



3811 LIGHT BLUE/OW

CALLA

170x240, 200x300 cm
Made to measure
Page 46



1016 WHITE/GREY



1229 BEIGE/MIDNIGHT BLUE



1512 BLACK/BEIGE



1615 GREY/BLACK

CAMELIA

170x240, 200x300 cm
Page 78



DAISY

80x240, 140x200,
170x240, 200x300 cm
Made to measure
Page 14



1512 BLACK/BEIGE



2011 SIENNA/OW



4711 OLIVE/OFF WHITE



2311 HAY/OFF WHITE

ERICA

140x200, 170x240,
200x300, 250x350 cm
Made to measure
Page 48



1411 CHARCOAL/OW



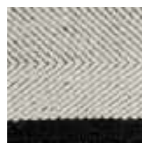
1516 BLACK/GREY



2711 LIGHT GREY/OW

FELICIA

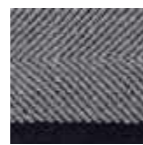
140x200, 170x240,
200x300 cm
Made to measure
Page 42



1111 OFF WHITE



1414 GRAPHITE



1616 GREY



2727 LIGHT GREY

FENRIS

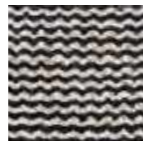
140x200, 170x240,
200x300, 250x350 cm
Made to measure
Page 62



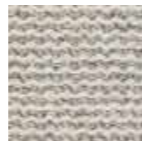
1116 OFF WHITE/GREY



1629 GREY/MIDNIGHT



1525 BLACK/NATURE



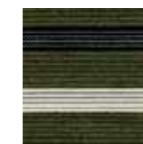
1125 OFF WHITE/NATURE

FLEUR

80x240, 140x200,
170x240, 200x300 cm
Made to measure
Page 12



1615 ASH/BLACK



1815 MOSS/BLACK



2021 SIENNA/PURPLE



2312 GOLD/LATTE

FRIDA

170x240, 200x300,
240x240, 250x350 cm
Made to measure
Page 30



1212 BEIGE



1616 GREY

GIMLE

140x200, 170x240,
200x300 cm
Made to measure
Page 52



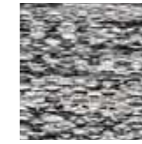
1011 WHITE/OFF WHITE



1211 BEIGE/GREY



1215 OFF WHITE/BLACK



1511 BLACK/OFF WHITE



5252 CORK



1818 WILLOW

GISLI

170x240, 200x300 cm
Made to measure
Page 32



1414 CHARCOAL



1616 WARM GREY

GJALL

160x230, 200x300 cm
Made to measure
Page 72



1212 BEIGE



1313 BROWN



1616 GREY



3939 DARK BEIGE



1010 WHITE



1414 CHARCOAL

GJALL

160x230, 200x300 cm
Made to measure
Page 74



4848 PETROL



5252 AMBER



3030 PEARL



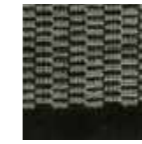
5353 RUBY



5151 TOPAZ

GRO

170x240, 200x300,
250x350 cm
Made to measure
Page 40



4712 OLIVE/BEIGE



1511 BLACK/OFF WHITE



4812 PETROL/BEIGE



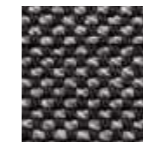
1611 GREY/OFF WHITE

HUGIN

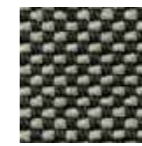
200x300, 250x350 cm
Page 90



1213 SAND/STONE



1516 BLACK/GREY



1518 BLACK/FOREST



1548 BLACK/OLIVE

HUMLE

170x240, 200x300 cm
Made to measure
Page 8



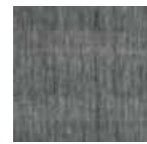
1614 GREY/CHARCOAL



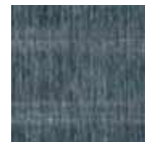
2710 LIGHT GREY/WHITE

LILY

170x240, 200x300 cm
Made to measure
Page 86



1414 SMOKE



2929 NIGHT SKY



1212 MARBLE



1919 ORIENTAL RED

LOKE

170x240, 200x300,
250x350 cm
Made to measure
Page 82



2727 LIGHT GREY



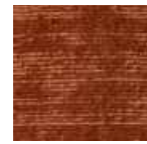
3737 DUSTY GREEN



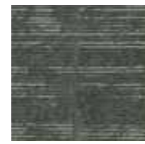
1212 BEIGE

LOKE

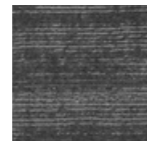
170x240, 200x300,
250x350 cm
Made to measure
Page 84



2020 TERRACOTTA



4848 PETROL



1616 GREY



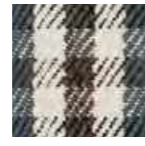
1414 CHARCOAL

LOTUS

170x240, 200x300 cm
Made to measure
Page 80



1615 GREY/BLACK



1642 GREY/MAHOAGANY



1715 BLUE/BLACK



1742 BLUE/MAHOAGANY

MUNIN

200x300, 250x350 cm
Page 88



1212 DRIFTWOOD



1313 PINWOOD



1818 FOREST



1414 STONE

NANNA

170x240, 200x300,
250x350 cm
Made to measure
Page 26



1414 CHARCOAL



1616 WARM GREY



2727 LIGHT GREY

NEW FREJA

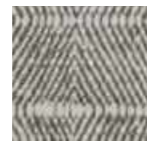
140x200, 170x240,
200x300 cm
Made to measure
Page 64



1013 WHITE/BROWN



1025 WHITE/NATURE



1616 GREY

NJORD

140x200, 170x240,
200x300, 250x350 cm
Made to measure
Page 38



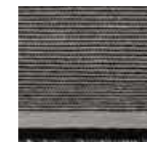
1415 CHARCOAL/BLACK



1610 GREY/WHITE



2710 LIGHT GREY/WHITE



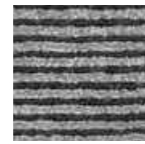
2715 LIGHT GREY/BLACK

ODIN

170x240, 200x300 cm
Made to measure
Page 44



1214 BEIGE/CHARCOAL



1615 GREY/BLACK

POPPY

80x240, 140x200,
170x240, 200x300 cm
Made to measure
Page 24



2312 YELLOW/BEIGE



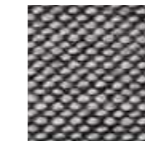
3812 LIGHT BLUE/BEIGE

ROLF

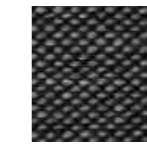
140x200, 170x240,
200x300 cm
Made to measure
Page 54



1112 OFF WHITE/BEIGE



1615 GREY/BLACK



1415 CHARCOAL/BLACK

ROSEMARY

90x250, 140x200,
170x240, 200x300 cm
Made to measure
Page 20



1512 BLACK/BEIGE



1627 GREY/LIGHT GREY

RUNE

140x200, 170x240,
200x300, 250x350 cm
Made to measure
Page 34



1616 GREY



1717 INDIGO



1818 FOREST

THOR

160x230, 200x300 cm
Made to measure
Page 76



1111 OFF WHITE

TANNE

140x200, 170x240,
200x300 cm
Made to measure
Page 60



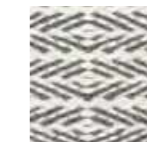
1015 WHITE/BLACK



1510 BLACK/WHITE



1610 GREY/WHITE



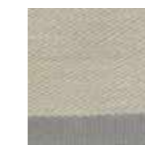
1016 WHITE/GREY

UNA

170x240, 200x300,
250x350 cm
Made to measure
Page 66



1116 OFF WHITE/GREY



2716 LIGHT GREY/GREY



1717 AQUAMARINE



5252 AMBER



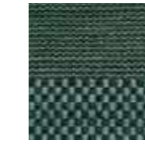
3053 LINGONBERRY

VERONICA

80x240, 140x200,
170x240, 200x300 cm
Made to measure
Page 22



1616 GREY



1818 GREEN



1717 BLUE

VIDAR

170x240, 200x300 cm
Made to measure
Page 10



1010 WHITE



1616 GREY

THANKS

to all of you

Gubi
Christina Lundsteen
Nuura
Christian Bruun
Fredericia Furniture
Garde Hvalsøe
Brdr. Krüger
LYFA
A. Petersen Studio
ALIUM
Louise Roe Gallery
Kristine Mandsberg
A hint of neon
Edition Copenhagen
Ferm Living
New works
Nyt i Bo
One Collection
Overgaard & Dyrman

Please wait to be seated
RO Collection
Studio Arhoj
Berit Mogensen Lopez
Mogens Koch
Pernille Snedker
&Tradition
Nomess
Kristina Dam Studio
FLOS Scandinavia
Kristina Krogh
Meyer Lavigne
Raawii
Skagerak
HAY
Flügger
Getama
Erik Jørgensen

Special thanks to:

Norr11
Josefine Winding
Foto Factory
&SHUFL

PHOTOGRAPHER - Bjarne B. Jacobsen
STYLING - Laura Scheuer Trøstrup / thesweetspot.dk
GRAPHIC PRODUCTION - Graphic Unit

Fabula Living ApS, Gotfred Rodes Vej 18, 2920 Charlottenlund
+45 2233 3966, info@fabulaliving.dk, www.fabulaliving.dk